



FRIENDS OF LESOTHO



METSOALLE ea LESOTHO

Fourth Quarter 2021
Newsletter



Photo courtesy Nicole Potsane. RPCV

Newsletter Features Clickable Links!!

Download the newsletter from www.friendsoflesotho.org and you can click on all the website addresses.

A Word From Our President

Lumelang Metsoalle,

First, I wanted like to thank our members who continue to support our work and the board members for all the hours they have put in. I am pleased to report that FOL continues to fulfill its mission to promote positive change and to assist the people of Lesotho.

I am happy to hear that the rain has arrived this October in Lesotho and that people have begun to plant their fields. Although field agriculture has a limited impact on Lesotho's economy at this point, for those who rely on crops, this is certainly welcome news. Although it has been 19 months since PCVs were in Lesotho, FOL is committed to maintaining the Tuition Assistance Program (TAP). Last year, working with recently evacuated PCVs, the PCL country office, and the Maseru Rotary Club, we were able to provide tuition assistance to over seventy high school students in Lesotho. FOL is currently in the process of making arrangements with both the Maseru and Maluti Rotary Clubs as well as with the Queen's Trust. In addition to helping us identify students, these organizations will help with the distribution of funds. One of the things that FOL is committed to doing is to make sure that TAP funds continue to reach children throughout Lesotho and not just in the Maseru area.

I should also note that after serving his country as ambassador to the United States, Ambassador Gabriel Maja returned to Lesotho. Some of you probably knew him during his time at Peace Corps, while others may have had the opportunity to interact with him during FOL's annual meeting. I would like to take this opportunity to thank Ambassador Maja one more time for being such a profound supporter of our work.

I know that Lesotho still holds a significant place in the hearts of all of us and that we all are still invested in the Basotho people. To help FOL continue to carry out its mission, we are looking for a few individuals to step up and join the Board. We are especially interested in finding one or two individuals who would be willing to serve as Treasurer. If you have a few hours a month that you can dedicate to FOL, please considering serving.

I would like to take this opportunity to recognize the contributions made by Ella Kwisnek over the last 17 years. Ella served as a PCV from 1992-1994 supporting the Lesotho Agriculture College in Maseru. Ella was a FOL Board member and served as Secretary from 2004-2008. Ella has been a major contributor to our newsletter by compiling *News From Lesotho* for the last 10 years. FOL is very fortunate to have such a long-term supporter of our organization.



Sincerely,
Dr. Scott Rosenberg
President, FOL
Honorary Consul, Kingdom of Lesotho

Inside this issue:

<i>President's Letter</i>	1
<i>Organizational News</i>	2
<i>Season's Greetings</i>	2
<i>Our Founding</i>	3
<i>Lesotho Nutrition</i>	3
<i>Short History of TAP</i>	4
<i>PC Reunion 2011</i>	5
<i>Wayfarer's Hymns</i>	5
<i>50 Years Ago</i>	6
<i>Sheila Kala, Poet</i>	7
<i>News from Qholaqho</i>	7
<i>News From Lesotho</i>	8
<i>Amazon Smile</i>	10
<i>Ways to Support FOL</i>	11
<i>FOL Membership</i>	12
<i>Treasurer's Report</i>	13



Friends of Lesotho Organizational News

Annual Meeting Announcement

Mark your calendar for March 13, 2022, 4 pm ET for our Annual Meeting. The Annual Meeting is held to highlight our accomplishments in the prior year as presented in our Annual Report. The meeting includes an announcement of election results along with speakers of interest to members and friends. Contact Kevin Caughlan, Secretary, at caughlan@earthlink.net for call in information via Zoom if you do not receive the information in an email notification.

Open Board and Committee Positions

There are openings for board service and committees in the coming year. Board commitment is for a 2 year term. Contact Scott Rosenberg, President, at srosenberg@wittenberg.edu for more information.

Treasure Position

FOL is in need of someone to take over the Treasurer position beginning next year. We are looking for a volunteer who has experience in bookkeeping and organizational financial records to make a three year commitment for this position. The Treasurer can be one or two individuals or a corporate entity who can provide this service gratis for a non-profit organization such as FOL. The current Treasurer will provide guidance and assistance on how to perform the required duties. If you are interested or know someone who may be interested, please contact Scott Rosenberg at srosenberg@wittenberg.edu.

Annual Appeal

Please watch for an electronic and paper mailing of our Annual Appeal being sent out to members and friends by early December. FOL depends on your generous giving each year to meet the needs of the people of Lesotho.

Donations Committee Report

Covid-19 Assistance: A total of \$6,000 was sent this quarter to community-based programs for emergency food aid to help communities alleviate food insecurity due to Covid-19.

Youth Empowerment: Support of \$2,000 to the Moholi Youth Empowerment Development Program focused on boys and girls 15 to 24 who are orphans, disabled, street kids, those who are held within Juvenile Training Centers, as well as those living with HIV/AIDS.

Malaleng Community Based Organization: Support of \$2,000 to purchase 500 layer chickens to raise funds in order to help in the education of the children of female headed families who were retrenched from their work at the Lesotho textiles industries.



Mosotho Angel retrieved from
<https://www.beafunmum.com/2018/11/christmas-decorations-from-around-the-world/>

**Keresemese e Monate le
Mahlohonolo a Selemo se Secha**



Our Founding 35 Years Ago

“Noka e thlatsoa ke melatsoana, kapa, ke linokana.” (Small beginnings may lead to large ends.)

FOL was established by a small group of very motivated individuals who had a passion for continuing the work begun while working as Peace Corps Volunteers in Lesotho. As testament to this initial group, the mission and core values have not changed in the last 35 years.



Over the years, a small group of individuals have founded, sustained, and grown the organization and continue to bring resources to its members and to the people of Lesotho. How FOL worked toward the goals and mission of the organization has changed over time – from an initial concept, planning & program initiation, to a period of organizational stagnation, to a renewal and organizational growth. Throughout these stages of development, numerous individuals gave their time and expertise to FOL in a variety of unique ways.


The context for the history of the organization includes the unique situation of being made up of a dispersed group of individuals, without paid staff, working with the available technology of the times. FOL grew from a Washington, DC based organization to a national Board of Directors. From a very modest beginning, FOL has evolved into a sustainable organization with much potential for the future

FOL got started at the Lesotho Ambassador’s residence in September 1986. The occasion was the 25th anniversary of the US Peace Corps and there was a big celebration in Washington, DC for the Peace Corps staff and volunteers. Many of the embassies hosted receptions, dinners, and parties on one of the nights over the weekend for all of the returned volunteers from their host countries.

A group of about twenty-five Lesotho Returned Peace Corps Volunteers (RPCVs) met in the downstairs of the Ambassador’s residence sometime later in the evening and began talking about setting up a Friends of Lesotho group. One of the RPCVs donated \$100 on the spot as seed money to help establish an organization. FOL had a budget and was ready to begin its journey!

The Founding Board Members included: Scott Brumburgh (President); Don Spicer (Vice President/Secretary); Ted Hochstadt (Legal Counsel); and David Bertocci, Thomas Carol, and Robert Kerr (Directors).

The Board started meeting on a regular basis. One of its first tasks was to work on the articles of incorporation and bylaws drafted by Ted Hochstadt. FOL was incorporated as a nonprofit corporation in Maryland in January 1988, and two years later the Internal Revenue Service granted the organization’s petition for recognition as a not-for-profit corporation under Section 501(c)(3) of the Internal Revenue Code.

The Board wanted to come up with a vehicle to send money back to Lesotho and struggled with that for a number of years as they considered requests from various groups. From 1989 through 1994, FOL donated \$3,000 to Trickle-Up, which made thirty small business development start-up grants with those funds. In 1991, FOL made its first donation to the Volunteer Liaison Committee (VLC). The first donation to the Tuition Assistance Program (TAP) was in 1992, both led by Peace Corps Volunteers in Lesotho. 

Lesotho Nutrition Initiative

Lesotho Nutrition Initiative (LNI) is an entirely volunteer-run humanitarian relief organization based in Ohio that focuses on alleviating hunger and malnutrition in the Kingdom of Lesotho through packing and shipping nutritious meals to our partners across the country. Lesotho faces various issues causing food insecurity that result in over 30% of children under five suffering from stunting and malnutrition.

LNI began as a research project at Wittenberg University by Dr. Scott Rosenberg and a group of students who recently returned from a service trip to Lesotho in 2014. LNI has sent over 2.5 million meals to our 28 partners throughout Lesotho, providing 3,500 Basotho children with access to daily life-saving nutrition every year. Our meals are culturally appropriate and contain a blend of rice, soy, dehydrated vegetables, and a nutritional supplement proven to halt and even reverse the effects of stunting and malnutrition on children under five. Good nutrition during the first 1,000 days of life is not only vital for proper cognitive and physical development but a determining factor in one's health outcomes more than any other time in their life.

LNI aims to help Basotho reach their full human potential through the power of nutrition. To learn more about LNI or how you can support our work, visit our website at

<https://www.lesothonutritioninitiative.com>.





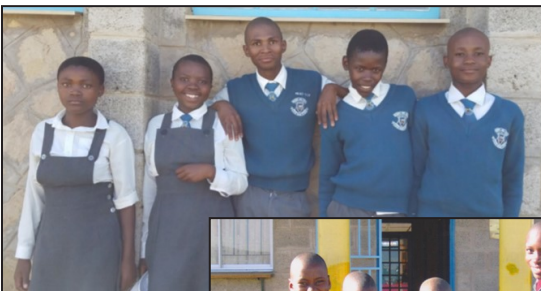
A Short History of the Tuition Assistance Program (TAP)

For over thirty years FOL has been partnering with PCVs in Lesotho to provide financial support to help Basotho students attend High School. Working with volunteers in 1992, FOL started sending money to the Volunteer Action Committee (VAC) for the purpose of funding scholarships. Starting off with an initial donation of \$1,000, by 1994 the program had taken off to the extent that FOL made a \$3,000 donation to support the scholarship fund.

The TAP program owes a huge debt to RPCV Sandy Puckett (BB 72-74), who started teaching at the Taipei American School in 1991. There he helped initiate a fundraiser for TAP that would help support the fund for over twenty years. Although Sandy died of a heart attack in 2009, the Taipei American School continues to honor Sandy by holding annual fundraisers to continue to support the TAP project. To date the Taipei School has donated well over \$50,000

The process by which FOL has sent TAP funds to Lesotho has evolved significantly over the years. For the first fifteen years FOL sent the money directly to the Volunteer Action Committee. These PCVs then handled the distribution of funds to the Volunteers who had nominated students from their school or community to receive financial help. In 2007, then Country Director Hill Denham, helped FOL set up a new FOL/Lesotho NGO to help channel funds to volunteer projects like TAP. The reason for the change was twofold, owing to both volunteer turnover at VAC and Peace Corps Washington policy changes regarding the transfer of funds to volunteers. Thankfully, 'Me Thembi of the Lesotho Peace Corps office was able to help administer the funds. Without her dedication and arduous work the TAP project might not have continued. In 2015 Peace Corps Washington instituted a new policy which prohibited organizations like FOL from sending funds directly to PCVs serving in country. Thankfully, working with Charlotte Kea in the PC Gift Office, FOL was able continue to send TAP money to PCVs through the Peace Corps Partnership Program (PCPP). Due to the evacuation of Volunteers because of the COVID pandemic in March of 2020, FOL faced a significant challenge in maintaining the TAP program. Thanks to Cayla Anderson and other evacuated volunteers, FOL was able to identify over seventy students to be recipients of TAP scholarships. Without the assistance of Clement Lephoto in the Country Office and the Maseru Rotary Club it would have been impossible for FOL to get the funds to the respective schools to pay the students' fees.

By 2010 just over \$71,000 had been sent to Lesotho to support scholarships. The program has continued to grow and in the first decade of the twenty first century over 1,000 students benefited from TAP. During the next decade the TAP program would reach new levels as over \$125,000 would be sent to Lesotho. The amount of funds sent for TAP rose steadily during the decade from \$10,000 to over \$24,000 in 2019. Since its inception in 1992, FOL has sent over \$200,000 to Lesotho to support TAP. TAP has been FOL's longest standing and most successful program and is now entering its fourth decade.



Left: TAP recipients pose for pictures

Right: The American School in Taipei Walkathon

Submissions wanted!!

Help us create our awesome newsletter! We are looking for photographs, articles, news from the front, creative writing, reflections from your volunteer experience, travel essays, and anything else Lesotho-related.

Please send your submissions for the next FOL Newsletter to Kevin Freer, kfreer49@gmail.com.

The next deadline is May 15, 2022



PC Reunion 10 Years Ago



<https://www.facebook.com/FriendsOfLesotho/>

FOL celebrated its 25th Anniversary at a PC Lesotho gathering in 2011 during the Peace Corps 50th Year Anniversary Celebrations in Washington, D.C. 🏠



Zakes Mda is one of South Africa's best-loved novelists – though he is also a celebrated playwright, children's book author and an increasingly visible painter. His latest novel, *Wayfarers' Hymns*, is at once full of drama and mirth, set in Lesotho and playing out in the bloody world of famo musicians. At a launch of the book at the University of Pretoria, Dr Nokuthula Mazibuko-Msimang interviewed Mda about it. An edited transcription of that interview is found at <https://theconversation.com/zakes-mda-on-his-latest-novel-set-in-lesothos-musical-gang-wars-170839> 🏠



Some Changes in Lesotho Over the Past 50 Years

by Returned Peace Corps Volunteer Greg Scieszka

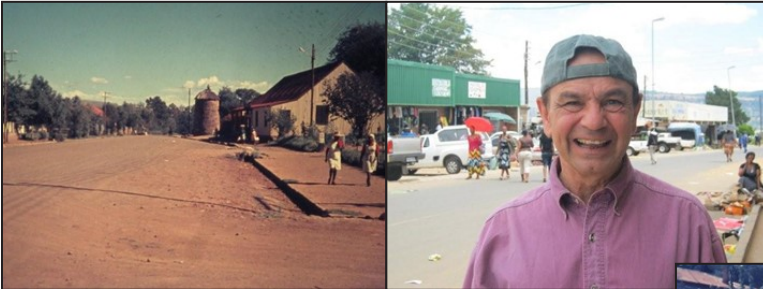
As Lesotho Peace Corps Volunteers in 1971-1973, my wife Marjorie and I have seen many changes in this mountainous landlocked country over these past fifty years. For example, we brought our one-year old son with us during the brief period of time when Peace Corps allowed families to participate. We returned to Lesotho from nearby Swaziland (now called *Eswatini*) where we served for a year as Response Volunteers. In 2015 we returned again for several months as Volunteers for a Canadian Non-Governmental Organization (NGO).

A major change that affected us was the South African regime's apartheid policy: as 1971 Volunteers in Lesotho helping the native population, we were not allowed to cross into South Africa, not even at the Johannesburg airport in transit to Maseru, nor for the next two years. We were not allowed to even shop for basic necessities nor for groceries.

By the time we were able to return to Lesotho in 2011, Nelson Mandela had not only been released from prison, but he had already served as president of South Africa. Now, Peace Corps Volunteers were no longer shunned by neighboring entities.

Many streets in Maseru and other regional centers, such as *Hlotse* (Leribe), were now paved, and traffic increased substantially. New buildings and even skyscrapers lined the capital. Lesotho was entering the 21st century.

The 1972 Peace Corps Office located on Maseru's Kingsway was by 2011 replaced by a more secure office just south of the city. Another major construction project brought the city a new post office.



Left: On a street in *Hlotse* (Leribe), this 1972 photo shows the British munition tower on the unpaved main street, while the 2011 photo w/ Greg was taken in front of the main street's Town Hall.

Right: My wife Marjorie holding our son Jimmy in front of the old Peace Corps Office on Maseru's Kingsway, and a 2011 photo of me standing near the new, more secure Peace Corps Office.



Left: 1972 Kingsway in the capital, and a similar scene in 2015.

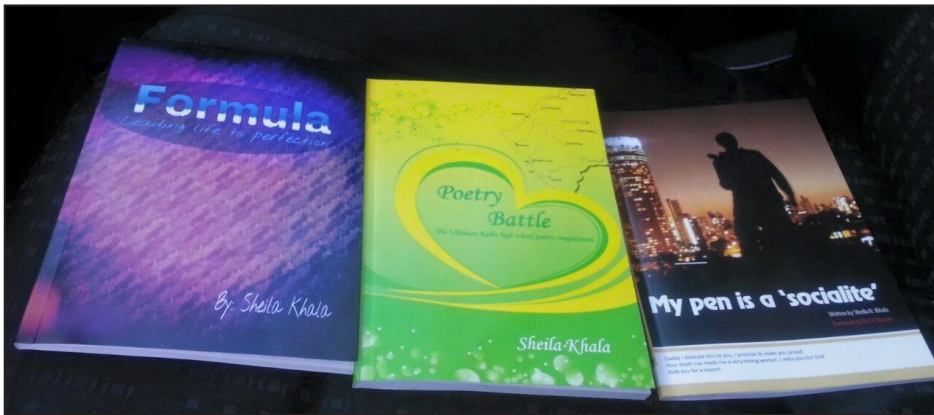
Right: Maseru's 1972 and 2011 post office.





Sheila Kala, Poet

Sheila Nomolanga Khala is one of the best-known poets from Lesotho. She is considered a "pioneer" of poetry in Lesotho and even founded a nationwide organization, Poetry is Alive. In addition, she is active in the South African poetry community. Read more at <https://www.facebook.com/sheilaproductions/photos/sheila-khalas-3-books-published-by-sheila-the-eagle-productions-1-formula2-my-pe/389047827923626/>



Sheila The Eagle Productions is a publishing and printing house whose production is largely based on Christian, motivational and literature books. This company founded by author Sheila Khala has become a home for many Christians, linguists, talent and a myriad of gifts. <http://www.findglocal.com/LS/Maseru/374911236003952/Sheila-The-Eagle-Productions>



QHOLAQHOE MOUNTAIN CONNECTIONS



P.O. BOX 405, HONEOYE FALLS NY 14472



INFO@QMCONNECT.COM



518 732 4279

November 2021

News from Qholaqhoe, Lesotho
by Lynn Minderman

<http://www.qmconnect.org>

Return to Qholaqhoe
October 5-19, 2021



Litaba tsa Lesotho (News from Lesotho) Compiled by Ella Kwisnek

Fake COVID-19 Passports

In October, Prime Minister Moeketsi Majoro announced that restaurants, bars, nightclubs, gyms and sporting facilities would only admit people who had a Covid-19 vaccination certificate. This resulted in the increase in the number of Basotho seeking vaccines, but also a proliferation in the sale of fake vaccine cards. Cards were being sold for as little as M20.00. Basotho are generally vaccine averse and as of September the vaccination rate was 16%. Some medical professionals are critical of the government not doing enough to promote vaccination.

Read more at <https://www.theguardian.com/global-development/2021/nov/04/vaccine-certificates-for-sale-scam-undermines-lesothos-covid-effort>

High Murder Rate

A recent World Population Review report indicated Lesotho has the sixth highest murder rate in the world. Contributing to this ranking are the unresolved killings of women and children that have rocked the country in recent years. Some attribute the problem to underfunding of the judiciary which has a significant case backlog. Others note the lack of consequences for wanton killings leading to a lack of deterrence.

Read more at <https://www.theguardian.com/global-development/2021/sep/01/lesotho-rate-ranked-sixth-worst-in-world-as-judicial-system-breaks-down>

Thabane Suspends NEC Member As ABC Rifts Escalate

All Basotho Convention (ABC) leader Thomas Thabane has suspended the party's national executive committee (NEC) member, Keketso Lepheane over social media posts questioning a recent celebration held at Thabane's home. Lepheane is reportedly a supporter of ABC deputy leader and Prime Minister Moeketsi Majoro who is vying for power with Thabane. Thabane allegedly hopes to reclaim the premiership if the ABC prevails in the 2022 general elections.

Read more at <https://lestimes.com/thabane-suspends-nec-member-as-abc-rifts-escalate/>

Mohapi Resignation Saga

Treasurer of the All Basotho Convention (ABC), Tlali Mohapi, said he has not resigned from the treasurer position and was surprised to receive a letter from party leader Thomas Thabane accepting his resignation from the position for failure to do his duties. He asserts that secretary general Lebohlang Hlaele and spokesperson Montoeli Masoetsa are plotting his ouster due to his probing possible mismanagement of party funds.

Read more at <https://lestimes.com/new-twist-to-mohapi-resignation-saga/>

NUL Closed

The National University of Lesotho (NUL) management closed the University indefinitely in response to an upsurge in student violence on campus. Students vandalized buildings and burned buildings in response to delays in disbursement of their allowances by the National Manpower Development Secretariat (NMDS). Shops near campus were also vandalized and looted.

Read more at <https://lestimes.com/nul-burns/>

Army Brutality

Four members of the Army allegedly beat a police officer and five civilians whom they suspected of smuggling wool into South Africa via the Makhaleng Border Gate in Mphahle's Hoek. The police officer died and his family, along with the brutalized civilians, are seeking damages.

Read more at <https://lestimes.com/soldiers-kill-police-officer/>

Cash for Wool

The Agriculture, Food Security and Marketing Ministry will pay farmers who are owed payments in cash because the farmers do not have bank accounts or have been difficult to locate. The payments have been owed since 2018.

Read more at <https://lestimes.com/govt-to-pay-wool-farmers-in-cash/>

New Judges Sworn In

Two new judges, 'Malebona Khabo and Realeboha Mathaba, were sworn in by Chief Justice Sakoane at the Royal Palace in Maseru. Another seven are expected to be sworn in "soon" as the government moves to address a crippling shortage of judges which has been blamed for the huge backlog of cases in the High Court.

Read more about the candidates credentials and the basis for the shortage of judges at <https://lestimes.com/two-more-judges-appointed-sworn-in/>

New Electricity Project

Prime Minister Dr Moeketsi Majoro recently launched an electrification project in Ha Rakobeli and Ha Arone. Funding for the project was approved by the Lesotho Electricity and Water Authority (LEWA), a body that regulates electricity, urban water and sewerage services. Five villages will benefit from the project, which is expected to be completed in May 2022.

The Lesotho Electricity Company (LEC) has been struggling to deal with theft and vandalism of electrical cables across the country. Distribution transformers are being vandalized for their copper windings and cables are stolen and sold. LEC is holding public gatherings in

(Continued on page 9)



News from Lesotho (continued from page 8)

villages to create awareness about the thefts.

Read more at <https://publiceyenews.com/new-electricity-projects-launched/>

Warehouse Fire

Nina's Warehouse at the Industrial Area was gutted by flames. The gutted building was a warehouse used for storing retail goods for distribution to smaller shops and was a residence for the owners. Read more at <https://publiceyenews.com/chinese-warehouse-gutted-by-fire/>

Mazenod School Burns

A classroom at the Roman Catholic Primary School in Mazenod was recently gutted by fire. One witness stated he saw two men aged between 18 and 25 years leaving the school premises in a rush and shortly thereafter saw smoke billowing from one of the classrooms. The principal reported that this was the third attempt at burning the same classroom. The first time was on May 17, but the classroom was saved by the Catholic congregation headed to their morning prayer that day. Two days later in the same month while arriving for work at 7:00 a.m. the acting principal discovered there was smoke coming in from a locker in the classroom.

Read more at <https://publiceyenews.com/mazenod-school-classroom-up-in-flames/>

Damning Report

Acting Auditor General Monica Besetsa presented a report critical of the establishment of the National Emergency Command Centre (NECC) and its successor, the National Covid-19 Secretariat (NACOSEC). Besetsa's report indicated that existing laws were not complied with when these entities were established. Further, she determined that the country's existing laws, regulations, operating structures and operational frameworks that were established before the advent of the coronavirus are adequate to respond to an emergency or disaster. "However, instead of strengthening the existing structures, the government opted to establish new ones, such as the NECC and NACOSEC, at the time of emergency and, in the process, there was non-compliance to national laws and regulations," reads the report.

Besetsa's assertions regarding both structures and more details on this story can be found online at: <https://publiceyenews.com/damning-report-on-nacosec/>

Highlands Water Project

The final construction projects under Phase II of the Lesotho Highlands Water Project are approaching as the Lesotho Highlands Development Authority seeks bids for Mabunyaneng and Khubelu bridges. The new bridges will be located upstream of two existing bridges along the A1 road to provide access to Mokhotlong.

Bids for construction of the largest bridge of Phase II, the Senqu River Bridge, were sought in March this year. And bids for construction of the Polihali transfer tunnel were sought in May and the Polihali Dam in August.

Read more at <https://publiceyenews.com/lhda-launches-procurement-for-lhwp-major-bridges/>

Teen Pregnancies

Teenage pregnancy remains a challenge in Lesotho. The adolescent birth rate is 94 per 1,000 girls aged 15-19 (2003-2018). A 2017 report by the United Nations Education, Scientific and Cultural Organization (UNESCO) listed Lesotho among the leading countries on early and unintended pregnancies. Unfortunately, pregnant teenagers do not always seek adequate antenatal care services for various reasons including fear of informing parents, lack of transportation, and concern about peers finding out.

Read more at <https://allafrica.com/stories/202111050826.html>

Read about the film *This is not a Burial, it's a Resurrection*, directed by Lemohang Jeremiah Mosese, at <https://www.rfi.fr/en/africa/20211022-poetic-story-of-resurrection-an-ode-to-lesotho-kingdom-s-spirit-fespaco>

Food Crisis

According to the October 2021 Lesotho Remote Monitoring Report produced by the Famine Early Warning Systems Network (FEWS NET), four out of 10 districts, Maseru, Mafeteng, Quthing and Qacha's Nek, are currently experiencing a "food crisis" due to the depletion of grain from the 2020/21 harvest. The crisis is expected to continue until April 2022 when most households begin harvesting grain from

The report indicates that unlike in previous years, the current food crisis has been compounded by the high prices for maize meal. Covid-19 is also having an impact because travel restrictions prevent some from going across the border to South Africa for jobs to augment their income.

Although the situation is expected to improve when the next harvest begins in April 2022, FEWS NET warns that planting will be negatively affected by the high costs of inputs.

Read more about sources of aid and expectations for the upcoming planting season at <https://lestimes.com/southern-parts-of-lesotho-in-a-food-crisis-report/>

Trials in Limbo

Basotho National Party (BNP) leader, Machesetsa Mofomobe, has accused the Democratic Congress (DC) and the Popular Front for Democracy (PFD) of plotting to derail high-profile trials involving various military personnel, including former army commander, Tlali Kamoli, and other suspects.

Those accused have denied the allegations, but Mofomobe asserts that the two parties had always opposed the decision to recruit foreign judges to preside over the high-profile trials of politicians and serving and former members of the security agencies.

He further asserts that they are delaying the process by failing to renew the contract of the Zimbabwean judge and the South African prosecutor.

Read more at <https://lestimes.com/ministers-fight/> and <https://lestimes.com/high-profile-trials-in-limbo-2/> 



METSOALLE ea LESOTHO

EARLY HOLIDAY SHOPPING?? TURN ON AMAZONSMILE TO SUPPORT FRIENDS OF LESOTHO!!
AMAZON SMILE IS NOW AVAILABLE ON THE AMAZON WEBSITE AND IN THE AMAZON APP!!

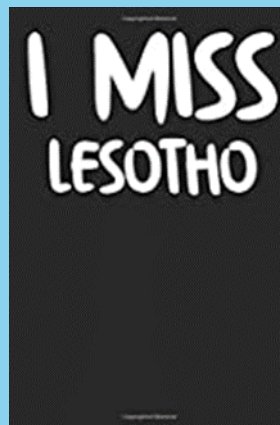


Amazon will donate a small percent of your purchases year round, with no extra charge to you, if you access their site through the AmazonSmile page or turn on AmazonSmile in your mobile app. One extra click by you enables FOL to send hundreds of dollars of donations to Lesotho each year.

<https://smile.amazon.com/gp/chpf/homepage?orig=%2F>



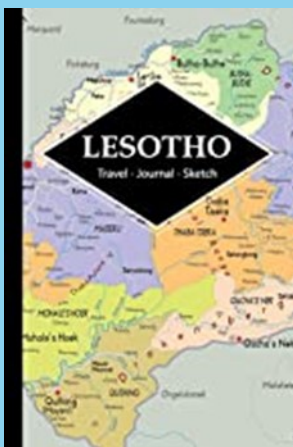
Weekly Calendar



Lined Notebook



Weekly Planner



Write and Sketch Your Lesotho Travels, Adventures, and Memories



Detailed Country Map Wall Art 27"x24" Photographic Quality



Lined Notebook



Ways to Support FOL

HELP FOL WITH YOUR EXPERTISE AND TIME

Board Service

- ◆ If you've always wondered how you could give a little more to FOL, now is the chance to volunteer your time, special skills, and enthusiasm. The members of the Board of Directors of Friends of Lesotho are elected based on their ability and willingness to contribute to the achievement of the organization's goals and objectives.
- ◆ Directors are members in good standing who are elected on their ability and willingness to support the purpose of FOL
- ◆ Nominations are welcome year round
- ◆ Elections are held at the Annual Meeting in October
- ◆ Directors serve for two-year terms

Committees and Task Forces

FOL members who do not wish to make a long-term commitment to the board are encouraged to:

- ◆ Join standing committees, or
- ◆ Work on special projects which match their skills and interests to the needs of the organization

There are also committees and task forces that help carry out the Board work. These committees include Donation Distribution, Membership, Fundraising and Board Nominations & Development.


Check out the [Board Information](#) page. Also, for a summary of the expected level of commitment see the [Board and Committee description of work](#). If you're interested in application or nomination, please complete the [Nominating Form](#) and email it to the address shown within the form. If you have any questions, please feel free to contact any of the committee members.

ATTEND FOL MEETINGS

Board Meetings

- ◆ Zoom meetings are held at 8pm Eastern on the third Sunday of odd numbered months. Minutes are posted about one week after each meeting.
- ◆ Meetings are open to all FOL members, please contact Kevin Caughlan (caughlan@earthlink.net) for call-in information.

FOL Annual Meeting

- ◆ Scheduled close to Moshoeshoe Day in March, via Zoom more information to follow on our website. Be on the lookout for your FOL Annual Report posted on our website following the Annual Meeting. 



Be an FOL Member for FREE!

Richard Rowan, RPCV Lesotho, qhomaki@mac.com

Hello, Bakhotsi! Your friendly FOL Membership Committee Chair Richard here.

Membership in Friends of Lesotho is free. Friends of Lesotho stopped collecting the mandatory \$15 yearly membership dues starting in January 2017.

[What do FOL's free dues mean for you?](#)

If you're currently a member of Friends of Lesotho:

You don't have to do anything. Your membership automatically renewed.

If you used to be a member but are no longer a member:

Take two minutes to fill out the updated [membership form online](#).

If you've never been a member:

What are you waiting for? There's never been a better time to start getting involved!

With membership fees in the rear view mirror, we need your help more than ever to continue doing the amazing work Friends of Lesotho does in Lesotho.

Amazon will donate money to Friends of Lesotho when you shop. Join Amazon Smile (smile.amazon.com) and add Friends of Lesotho as a beneficiary. Remember to use Amazon Smile when you shop on-line.

Get involved with one of the many committees in FOL.

Donate generously to our many projects, using the [form online](#).

And Remember :

We couldn't do and support the work, have the impact, and save the lives we do without your financial support. Your contributions support our work in:

- ◆ HIV/AIDS
- ◆ Orphanages
- ◆ Tuition Assistance including Memorial Scholarships
- ◆ The Morija Museum
- ◆ Peace Corps Volunteer Projects
- ◆ Community Development Projects
- ◆ Other types of projects as new opportunities arise

We work because you give.

Whether it's \$5 or \$5,000, all donations help us reach further and save more lives and because we're a registered 501(c)3, your donation is tax deductible!

If you'd like to give, please go to: <http://www.friendsoflesotho.org/donate/>

Newsletters Past and Present—The FOL Newsletter, *Metsoalle ea Lesotho* is posted on our website homepage (<http://friendsoflesotho.org>) each quarter of the year. The complete set of newsletters is available on our website from Issue Number One, Summer, 1987 to the present. Go to Newsletters at the bottom of the home page for the archives.

Submit Newsletter Articles—Pass on RPCV updates. Recommend a Mt. Kingdom movie, music, book or Website. Share new or old photos. Been to Lesotho lately? Share it!

Submit articles, photos, or information of interest to our members to:

Kevin Freer, FOL Newsletter Coordinator kfreer49@gmail.com



Follow us on Facebook:

<https://www.facebook.com/FriendsofLesotho>



Share your photos!

Send to editor at:

kfreer49@gmail.com



Follow us on twitter:

<https://twitter.com/FOLesotho>



Visit our website:

<http://www.friendsoflesotho.org>





Treasurer's Report

Year:	2021		
Last Update:	11/5/2021		
DONATIONS			
Donation Type	Total Donation (Including Fees)	Donation Related Fees	Total Net Donation
Check	\$11,784.28	\$0.00	\$11,784.28
Interest Earned	\$41.75	\$0.00	\$41.75
Other - see Description	\$17,035.70	\$0.00	\$17,035.70
Paypal Transfer	\$9,100.00	\$225.71	\$8,874.29
Grand Total	\$37,961.73	\$225.71	\$37,736.02
Project Expense Type	(All)		
Transfer Status	(Multiple Items)		
EXPENSES			
Expense Type	Total Expenses		
Failed Transfer - Lost exchange rate	127		
Misc. Supplies	346.32		
Project	34072		
Tax Fees	100		
Wiring Fees	880	Successful Only	
Grand Total	35525.32		
Expense Type	(Multiple Items)		
Transfer Status	(Multiple Items)		



GOT PHOTOS?

Do you have photos from Lesotho?
We would love to feature them in the newsletter!
Send your photos to the editor
kfreer49@gmail.com

Account Type	Year Starting Balance	Current Balance	Wire Transfers (loss)
Checking	\$22,201.29	\$18,677.49	\$127.00
Savings	\$23,916.01	\$23,957.76	
Total	\$46,117.30	\$42,635.25	

MONTHLY CHECKING ACCOUNT ACTIVITY			
SUM of Amount	Activity Type		
Date - Month	Deposit	Expense	
Jan	\$11,373.98	\$12,887.00	
Feb	\$8,421.61	\$4,229.90	
Mar	\$2,048.41	\$5,590.00	
Apr		\$940.00	
May	\$1,993.85		
Jun	\$4,583.00	\$5,630.00	
Jul	\$1,540.41	\$13,185.00	
Aug	\$405.98		
Sep		\$196.42	
Oct	\$15,000.00	\$6,240.00	
Nov	\$7.28		
Grand Total	\$45,374.52	\$48,898.32	

PROJECTS OVERVIEW		
Project Name	Project Expense	Total Project Expenditures
Justice Kalebe	Project Donation	3500
	Wiring Fee	80
Justice Kalebe Total		3580
Lerato Nkesi	Failed Transfer/Lost	30
	Wiring Fee	120
Lerato Nkesi Total		150
Mamonaheng Repapa	Project Donation	1000
	Wiring Fee	40
Mamonaheng Repapa Total		1040
Mankoe & Lerato	Project Donation	4000
Mankoe & Lerato Total		4000
Mankoe Lebitsa	Wiring Fee	40
Mankoe Lebitsa Total		40
Monica Letosha	Project Donation	4000
	Wiring Fee	120
Monica Letosha Total		4120
Morija Museum	Project Donation	3647
	Wiring Fee	80
Morija Museum Total		3727
Motena Tau	Project Donation	4000
	Wiring Fee	120
Motena Tau Total		4120
Rotary Club of Maseru	Project Donation	5925
	Wiring Fee	80
Rotary Club of Maseru Total		6005
Teyana Neufeld	Project Donation	2000
	Wiring Fee	40
Teyana Neufeld Total		2040
Thaba-Tseka Famers Cooperative Society	Failed Transfer/Lost	97
	Project Donation	3500
	Wiring Fee	80
Thaba-Tseka Famers Cooperative Society Total		3677
Touching Tiny Lives	Project Donation	2500
	Wiring Fee	80
Touching Tiny Lives Total		2580
Grand Total		35079



FRIENDS OF LESOTHO

115 Monteray Avenue
Oakwood, OH 45419



METSOALLE ea LESOTHO

Fourth Quarter 2021
Newsletter



FRIENDS OF LESOTHO

President: Scott Rosenberg (srosenberg@wittenberg.edu)

Vice President: Bill Moore (litapole@gmail.com)

Secretary: Kevin Caughlan (caughlan@earthlink.net)

Treasurer: Rory Pulvino and Rachel Edmonds

Board Members: Cayla Anderson (cayla.a23@gmail.com)
Rachel Edmonds (redmonds48@gmail.com)
Marisa Ernst (ernst.marisa@gmail.com)
Kevin Freer (kfreer49@gmail.com)
Jennifer Jiggetts (jenjiggetts@gmail.com)
Ali Kukovich (ali.kukovich@gmail.com)
Emma Mcevoy (e.mc.evoy05@gmail.com)
Tishina Okegbe (tokegbe@gmail.com)
Rory Pulvino (rapulvino@gmail.com)
Richard Rowan (qhomaki@mac.com)
Danielle Sharp (danielle.m.sharp@gmail.com)
Andrew Steele (andreesteele2@gmail.com)
Meghan White (white.meghan0@gmail.com)

Newsletter Team: Kevin Freer, Editor (kfreer49@gmail.com)
Nicole Potsane, Graphic Designer
Mary Howard and Deena Lawrence, Copy Editors
Ella Kwisnek, News from Lesotho

Social Media: Ali Kukovich and Megan White

Website: Marty Smith