



FRIENDS OF LESOTHO

METSOALLE ea LESOTHO

Second Quarter 2020
Newsletter

A Word From Our President

Lumelang Metsoalle,

First, I wanted like to thank our members who continue to support our work and the board members for all the hours they have put in. I am pleased to report that FOL continues to fulfill its mission to promote positive change and to assist the people of Lesotho.

The COVID-19 pandemic has created unprecedented challenges for FOL as it tries to fulfill its mission to assist the Basotho people. The lockdown which lasted several weeks has caused significant hardship for many of Lesotho's vulnerable individuals. The ongoing lockdown in South Africa continues to cutoff Basotho workers from needed incomes. FOL is attempting to respond to this crisis by identifying food pantries dedicated to COVID-19 relief in Lesotho. To this point we have been able to assist one in Morija, but it is our hope to be able to assist two or three others in this much needed work this week.

As many of you may have heard, all Peace Corps Volunteers serving in Lesotho were sent home in mid-March. Although the PCV group 88s will not be sent back, there is some hope that the 89s (who were sworn in last year) will be able to return by the end of 2020. We are proud to announce that we are working with the TAP committee (and thrilled that they have volunteered themselves to continuing the process), with the hopes that we will still be able to provide at least 70 TAP scholarships this year.

FOL held its Annual Meeting this year on March 22nd, and it is one that I will remember for a long time. Although it did not go as planned, in true Peace Corps fashion we pulled off a successful and fun meeting. I was very pleased and honored that Lesotho's Ambassador to the United States, the Honorable Gabriel Sankatana Maja was able to join us again. The Ambassador was able to provide us some up to date information on what was happening in Lesotho, especially in regards to school closures and how that would affect meal programs. Unfortunately, U.S Ambassador to Lesotho, the Honorable Rebecca Gonzalez was unable to attend the call due to the unfolding situation in Lesotho. Thankfully, recently evacuated PCV Cayla Anderson was able to join us on the call while still in quarantine and provide us updates both on what was happening before COVID-19 as well as the evacuation process.

The Annual Meeting also ushered in a new era for FOL. At the Annual Meeting 8 new members were elected to the board, which is probably the most new members that have joined in any year since I have been on the board. I was thrilled the former board member and FOL President Kevin Freer has agreed to return to the Board. The other 7 new members all served within the last decade, and some as recently has this year. I believe that getting recently returned volunteers is vital to the health of FOL, as they have a better understanding of what is happening in the country now. I welcome their fresh ideas, and am thrilled that they have joined.



Sincerely,
Dr. Scott Rosenberg
President, FOL
Honorary Consul, Kingdom of Lesotho



Newsletter Features Clickable Links!!
Download the newsletter from the FOL website www.friendsoflesotho.org and you will be able to click on all the website addresses.



Photo courtesy Nicole Potsane, RPCV

Inside this issue:	
<i>President's Letter</i>	1
<i>FOL COVID-19 Update</i>	2
<i>In Memoriam</i>	2
<i>Estate Planning</i>	3
<i>Fundraising Committee</i>	4
<i>FOL Sponsored Classroom Furniture</i>	4
<i>Organizational News</i>	5
<i>Lithaba tsa Lesotho</i>	6
<i>Lesotho Archaeology</i>	8
<i>Lesotho Travel</i>	8
<i>Support FOL</i>	9
<i>FREE FOL Membership</i>	10
<i>Treasurer's Report</i>	11



Friends of Lesotho COVID-19 Update

Dear Friends of Lesotho Community,

It is our hope that you and your family remain safe and are staying healthy during these challenging times. We know that we are all impacted by the COVID-19 pandemic in our own personal and profound ways. Beyond the worries for your own local contexts and communities, perhaps you have also wondered what the current COVID-19 pandemic means for lives and livelihoods in Lesotho.

Here are some updates on the current situation in Lesotho:

- Like other countries in Sub-Saharan Africa, the government of Lesotho imposed a lockdown to prevent or slow the spread of the novel coronavirus. The lockdown started at the end of March and will be in effect until at least May 5, 2020. (as of 4/23/2020).
- The good news is that a 15 April 2020 WHO Situation Update still reports no confirmed COVID-19 cases in Lesotho, making it – together with the Comoros – **one of only two countries without COVID-19 cases**; however, testing capabilities remain limited.
- In contrast, South Africa is considered one of the most affected countries on the continent with over 4,000 confirmed cases.
- Even without active COVID-19 cases, Lesotho has been severely affected by the pandemic. **Enforced by police and the military**, the lockdown has brought much of public life to a near standstill – particularly in and around urban areas. Factories are closed, street vendors have been unable to sell their goods, and cross-border commerce and travel have been severely restricted. Schools, too, have been shuttered, with minimal options for teachers and students to substitute classroom instruction with distance learning.

Impact on Peace Corps Lesotho:

- All Peace Corps Volunteers have been recalled to the United States and will not be returning to Lesotho to complete their service. Many projects initiated or planned by these volunteers had to be abandoned, including the nomination process for the Tuition Assistance Program, or TAP, a long-standing project that has supported deserving, vulnerable students to stay in school.

Under this combination of circumstances, “business as usual” is not an option. We, as the board of directors for Friends of Lesotho, are currently exploring ways to best support our partners in Lesotho. During these uncertain times, our commitment to Lesotho remains steadfast. We will continue to support the most vulnerable and remain in close conversation, partnership and friendship with our Basotho friends.

Thank you for your continued support of Friends of Lesotho. If you’d like to support FOL during this unprecedented time, you may make a gift by visiting <https://www.friendsoflesotho.org/>.

As the situation in Lesotho continues to develop, we will be in communication with more important updates.

Kea leboha haholo,

The Friends of Lesotho Board of Directors 

In Memoriam: Joan Mary Ambre



Those who served as Peace Corps Volunteers in Lesotho in the 1970s remember Joan Ambre, wife of Peace Corps Director, Earl Ambre. Joan passed away peacefully surrounded by family on September 18, 2019. Many of us did not know that Joan and her husband Earl began their Peace Corps experience with a 2 year tour as volunteers in Jamaica, where they were married in 1970 by Joan’s brother, Jim. While in Jamaica, they established 50 junior secondary schools and were jointly responsible for numerous program innovations, both in the Caribbean and Lesotho.

On the 25th anniversary of the Peace Corps, their work was acknowledged by Parliament as part of the contribution of Peace Corps’ to Jamaica’s development. After completing their volunteer service, they were invited to serve on staff in the other Caribbean Islands, developing programs for placement of new volunteers. On their return to the United States in 1978, Joan held many administrative positions in the Peace Corps, Bureau of Land Management and Departments of Labor and Interior. She retired as the Director of Personnel for the Peace Corps in 1996. Joan bequeathed a generous donation to FOL in her estate planning.

<https://www.hansenmortuary.com/joan-mary-ambre/> 



Estate Planning—Interview with Doug Mayo

What is your connection with Lesotho and FOL?

I was a Peace Corps Volunteer in Lesotho from September 1967 until late December 1969 (including our three months training program), along with several founders of Friends of Lesotho. I was one of the original members of FOL. Ever since I have contributed annually to FOL to support educational and development programs in Lesotho.

What motivated you to include FOL in your estate planning?

My support for development and education in Lesotho has now extended nearly forty years. I've seen positive results from contributions made by me and many others. I last visited Lesotho in 2013 and was impressed by progress in education, infrastructure and business development. At the same time, I could see that as in most of sub-Saharan Africa much remained to be accomplished. The legacy I leave through my estate along with others will help to sustain development activities in Lesotho.

How would you like FOL to use your gift in future years?

My gift is undesignated, so that FOL will have the flexibility to direct funds to wherever the need is greatest. FOL has always thoughtfully designated the money donated by its members and others for current critical needs in Lesotho, so I have confidence that it will be an outstanding steward of any legacy I leave.



Outside my home in Teyateyaneng in 1969. Picture taken by Bill Reed, RPCV-Lesotho.

What resources did you use to arrange a bequest in your will?

I knew what I wanted to do—namely to provide a legacy to FOL and Lesotho from my estate through my will. However, a quick internet search will provide many other suggestions. Your financial advisor or attorney can also provide suggestions appropriate to your circumstances. There are just so many ways to “give it away” and it’s not that difficult to do.

What advice do you have for others who are thinking of including FOL in their estate plans?

Do it now! In these uncertain times, due to the COVID-19 pandemic, none of us know how long we’ll live. The development and educational needs in Lesotho are great, so our financial support is critical. Remember, you can’t take it with you. 🏠



I was involved in an in-service teacher training program. I spent most of my time with teachers in their classrooms, though I sometimes taught in workshops, as was the case here. This photograph was taken in Mokhotlong sometime in summer 1969.

FOL members can request information on more ways to give: Wills, Estate planning, IRAs, Insurance policy beneficiary, or other bequests and memorial gifts. Please see the [Wills and Estate Planning Guide](#) or contact [John Hollister](#) for more information.

<https://www.friendsoflesotho.org/how-to-support-fol/fundraising-ideas/>



Fundraising Committee Seeks \$\$ and Ideas

The fundraising committee's job is to make sure Friends of Lesotho has resources to help support education and local development projects initiated by Basotho in cooperation with Peace Corps Volunteers. Traditionally, the committee's main way of seeking donations has been through an annual appeal letter sent to FOL members and friends each fall. More recently, we've added periodic crowdfunding appeals to our repertoire.


Generous donors contributed over \$13,000 to the 2019 Annual Appeal. And the most recent online fundraiser for the Tuition Assistance Program (TAP) drew \$15,000 in donations.

Some FOL members don't wait to be asked, but give to FOL on their own initiative. One clever idea is to designate a month every year as ***Khotso Pula, Nala month*** and set aside a certain amount every day it rains to donate to FOL at month's end.

FOL members also organize events such as parties or yard sales to raise money for FOL or for specific projects. The leading example of this is the Taipei School, which holds a fundraising walkathon every year for the benefit of FOL, in memory of the late Lesotho RPCV Sandy Puckett, a teacher at the school who started the walkathon. This year's walkathon raised \$11,000.

Using FOL's link to Amazon to make purchases is another way to contribute. Amazon directs a small percent of purchases made through the FOL web page to our organization.

A new idea that the fundraising committee is currently considering is to send an email update every month to FOL members, donors and friends, with news from Lesotho and an invitation to contribute support for a particular FOL-backed project.

The fundraising committee appreciates the generosity of all who contribute to FOL, by whatever means. As the proverb reminds us, *Noka e tlatsoa ke linokana*. (A river is filled by small streams). And we're open to suggestions of new ways to connect with donors. If readers are interested in helping out, please contact Marissa Ernst, ernst.marisa@gmail.com. 

FOL-Sponsored Desks & Chairs Furnish Classrooms at Maseru's Lord's New Church High School

We all experience it every day: Together, we can accomplish goals that would be impossible to reach alone. This is also true for the cooperation that came to fruition between *The Lord's New Church* (<https://www.thelordsnewchurch.org/>) and Friends of Lesotho.

In 2019, the church's fundraising committee approached Friends of Lesotho for assistance with an ambitious plan: They needed help furnishing a newly built High School where young people in the Maseru area would get a chance at a good education. The school is now in its second year of operation, and its two grade levels include 151 students. The Lord's New Church High School is committed to serving children from all socio-economic backgrounds.



The Friends of Lesotho board approved US \$3,800 for the purchase of classroom furniture. As the photo shows, they are already installed in the new classrooms, where they contribute to an improved learning environment.

The simple and sturdy student desks and chairs were purchased from a supplier and workshop in Khubetsoana. It is likely that as an additional spin-off, the furniture order also created welcome employment for Basotho workers.

Marissa Ernst, Fundraising Committee 

Submissions wanted!!

Help us create our awesome newsletter! We are looking for photographs, articles, news from the front, creative writing, reflections from your volunteer experience, travel essays, and anything else Lesotho-related.

Please send your submissions for the next FOL Newsletter to Kevin Freer, kfreer49@gmail.com.

The next deadline is August 17, 2020



Friends of Lesotho Organizational News

New Mailing Address

Friends of Lesotho, Inc.
115 Monteray Ave.
Oakwood, OH 45419

Annual Meeting

FOL held its Annual Meeting on March 22. Speakers included Lesotho's Ambassador to US The Honorable Gabriel Sankatana Maja and Cayla Anderson, a recently evacuated PCV from Lesotho.

Welcome to the new board members elected at the Annual Meeting: Cayla Anderson, Rachel Edmonds, Kevin Freer, Jennifer Jiggetts, Emma Mcevoy, Rory Pulvino, Danielle Sharp, and Meghan White.

Access to 2019 Annual Report

<https://www.friendsoflesotho.org/wp-content/uploads/FOL-2019-Annual-Report.pdf>

Also available on our website - scroll to the bottom of the page

<https://www.friendsoflesotho.org/membership/newsletters/>

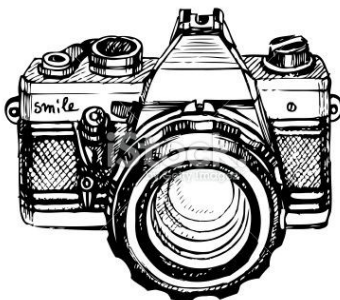
FOL Membership Committee

The Sesotho proverb “Morena ke batho” translates to something like “No people no chief”. When it comes to FOL we could say “No members, no FOL.” The FOL Membership Committee has the responsibility to manage the Friends of Lesotho membership list, and to advise the Board of Directors on ways to reach out to members, increase membership and ensure that FOL is meeting the needs of its members.

The Membership Committee is itself in need of some members. There are several areas that need attention, for instance:

- Since dues are no longer collected, define what it means to be a member in good standing.
- Find out from members what their preferred form of contact is, e.g., email, text, etc.
- Work with the Social Media Committee to develop ways to reach out to people who might be interested in joining FOL.

If you are interested in joining the FOL Membership Committee, please contact richard.rowan@friendsoflesotho.org.



GOT PHOTOS?

Do you have photos from Lesotho? We would love to feature them in the newsletter!

Send your photos to the editor kfreer49@gmail.com



Litaba tsa Lesotho (News from Lesotho)

No Immunity for Thabane – Plans to Step Down

The All Basotho Convention party refused to grant Prime Minister Thomas Thabane immunity from prosecution in connection with the 2017 murder of his estranged wife, Lipolelo Thabane. Thabane is facing pressure to resign before the end of July 2020. He previously declined an offer from the coalition government and South African mediators to step down with a dignified retirement. Read more at

<https://allafrica.com/view/group/main/main/id/00073040.html> , <https://publiceyenews.com/pressure-mounts-for-thabanes-ouster/> and <https://www.cnn.com/2020/05/07/africa/lesotho-pm-thabane-step-down/index.html>

Lesotho's coalition government has collapsed, leaving Prime Minister Thomas Thabane without enough seats to continue governing, the parliament speaker has announced, adding that Thabane had to step down by May 22. Read the full story on BBC news at

https://www.bbc.com/news/live/world-africa-47639452?ns_mchannel=social&ns_source=twitter&ns_campaign=bbc_live&ns_linkname=5eb962607486b406616ebef2%26End%20of%20the%20road%20for%20Lesotho%27s%20embattled%20PM%262020-05-11T14%3A59%3A53.529Z&ns_fee=0&pinned_post_locator=urn:asset:b196e769-c072-4b98-89aa-fe3a2d4d8fb4&pinned_post_asset_id=5eb962607486b406616ebef2&pinned_post_type=share

Lesotho records first coronavirus case a week after lifting lockdown

The government of Lesotho said on May 12 there is now a likelihood that more cases could be recorded before the end of the week after the Ministry of Health said it was awaiting results for 301 cases where tests had been done and sent to neighbouring South Africa.

The tiny southern African mountain kingdom had until Tuesday enjoyed the tag of being the only Covid-19-free country on the continent.

But the enviable distinction evaporated with the government saying one suspected case had come back positive from 81 samples sent for testing in South Africa on Saturday. The tests were for people coming back from South Africa and parts of the Middle East. Read more at

<https://www.theguardian.com/world/2020/may/13/lesotho-records-first-coronavirus-case-a-week-after-lifting-lockdown>

Is Corporal Punishment Legal in Lesotho

Thirty years ago Lesotho adopted United Nations Convention on the Rights of the Child, an international agreement on the treatment of children. The convention, among others, advocates the abolition of all forms of corporal punishment. Principal Secretary in the Ministry of Education and Training Thabang Lebeso says corporal punishment is illegal in Lesotho and any teacher that practices it in can be jailed. He said the Education Act of 2010 and the education codes of good practice of 2011 categorically stipulate that corporal punishment has to be abandoned as it is against the law. The government has had to pay compensate multiple families whose children were seriously injured to due corporal punishment. However, Chairperson of Lesotho Association for Teachers (LAT), Letsatsi Ntsibulane, disagrees with the education PS and claims that corporal punishment is not illegal. Further, he deems the practice appropriate. Read more at <https://publiceyenews.com/teachers-dilemma-to-smack-pupils-or-not-to/>

Price Gouging During Lockdown

The Ministry of Trade and Industry has threatened to revoke operating permits of retailers charging “predatory prices.” Officials have received complaints of retailer increasing prices on groceries, including basics such as flour and mealie-meal. Read more at <https://publiceyenews.com/rogue-retailers-risk-losing-operating-permits/>

Mereng Consultants Helps Street Vendors

Mereng Consultants Pty Ltd. Recently distributed food to about 400 street vendors in Maseru. Street vendors are daily wage earners, and most of them are thus struggling to feed their families during the lockdown, which started on March 29. The lockdown, which was expected to end on April 21, was extended by two weeks to May 5 to check the spread of the coronavirus. Read more at <https://publiceyenews.com/mereng-consultants-rescues-street-vendors/>

Minister Granted Bail after being charged for purchasing alcohol

Police and Public Safety Minister, Lehlohonolo Moramotse, who was charged after violating a 2020 Public Health regulations (Covid-19 2020) by purchasing alcohol, was granted bail. During the lockdown there is a total ban on not only the sale but distribution or

(Continued on page 7)



Litaba tsa Lesotho (continued from page 6)

transportation of liquor. Read more at <https://publiceyenews.com/police-minister-granted-bail/>

No Pay for Factory Workers Until 2020/21 Budget Passed

The approximately 45,000 factory workers in Lesotho who expected a M800 subsidy learned that the funds will not be released until parliament passes the 2020/21 budget. Read more at <https://allafrica.com/stories/202005040979.html>

MPs Reject Six Months State of Emergency

Prime Minister Thomas Thabane had requested that the house approve a six months state of emergency as part of efforts to fight the Coronavirus (COVID-19) pandemic. The Prime Minister stated that the extra time would enable the government to take appropriate measures to fight the virus while we gradually lift the lockdown. However, the motion failed and some suggested that the government instead use the Disaster Management Act to declare a state of disaster in the fight against the possible spread of COVID-19 because that does not require parliament to act. There was some concern that the Prime Minister's proposal had political motivations because on April 18 he had deployed the army around Maseru, purporting it was necessary to deal with "rogue elements." Read more at <https://allafrica.com/stories/202005040976.html>

Blood Bank Runs Dry

The Lesotho Blood Transfusion Services (LBTS) has almost run out of blood. Recently, it was reported that LBTS only had 120 units of blood. LBTS donations decreased significantly after the Ministry of Education and Training imposed stringent regulations that made it difficult for students to donate. A similar shortage six months ago led to hospitals requiring patients who needed transfusions to bring relatives or other donors to the hospital with them. Read more at <https://allafrica.com/stories/202004230678.html>.

Mining Sector Significantly Impacted by COVID-19

Mining companies have been closed during the nationwide lockdown. They have also been unable to sell their diamonds because their markets are also closed and travel bans have made it almost impossible to travel internationally. If the lockdown continues, some mines are considering temporary closure, downsizing, and layoffs. They will attempt to convince the government that they are an essential service and that, if permitted to open, they could ensure worker safety through screening, testing, social distancing, quarantining employees where applicable, social distancing, washing of hands, use masks, etc.). Read more at <https://allafrica.com/stories/202004230651.html>

What was the Purpose of the April Army Deployment?

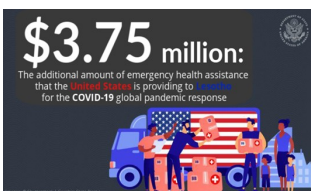
Police Commissioner Holomo Molibeli has implicated Prime Minister Tom Thabane and his wife, First Lady 'Maesaiah Thabane, in the 2017 murder of Thabane's ex-wife, Lipolelo Thabane.

Purportedly in an effort to get rid of Molibedi, three ministers, a principal secretary, and Government Secretary Moahloli Mphaka allegedly planned the April 18, 2020, deployment of soldiers around Maseru. The Sunday Express newspaper reported that Thabane allegedly ordered army commander, Lieutenant General Mojalefa Letsoela, and his troops to arrest Commissioner Molibeli and two of his close subordinates. The three were supposed to have been put in army custody and put on trial for attempting to oust Thabane's government. Thabane made a televised address the same day urging the army to deal severely with all those he claimed were destabilizing his government.

However, the plan failed when Lieutenant General Letsoela defied the order to arrest Molibeli. Molibeli contended that those who planned his arrest had hoped that he would resist and therefore give them an excuse to kill him. He is concerned that there will be subsequent attempts on his life and plans to seek protection from the courts. Read more at <https://allafrica.com/stories/202005040985.html>

United States Supports Economic Prosperity in Lesotho through New AGOA Strategy

The Ministry of Trade and Industry launched an African Growth and Opportunity Act (AGOA) Utilization Strategy for Lesotho in Maseru, January 22, 2020. The strategy, developed with support from the USAID Southern Africa Trade and Investment Hub, is designed to increase trade and investment, support economic development, and diversify sources of growth for Lesotho. Effective use of the strategy will position more Lesotho businesses for duty-free access to the U.S. market, creating more job opportunities in the country. Read more at <https://ls.usembassy.gov/remarks-by-ambassador-rebecca-gonzales-at-the-launch-of-the-agoa-response-strategy-january-22-2020/> and <https://ls.usembassy.gov/united-states-supports-economic-prosperity-in-lesotho-through-new-agoa-strategy/>



<https://ls.usembassy.gov/united-states-supports-economic-prosperity-in-lesotho-through-new-agoa-strategy/>





Stone-age 'likes': Study Establishes Eggshell Beads Exchanged Over 30,000 Year in Lesotho



UNIVERSITY OF MICHIGAN—ANN ARBOR—A clump of grass grows on an outcrop of shale 33,000 years ago. An ostrich pecks at the grass, and atoms taken up from the shale and into the grass become part of the eggshell the ostrich lays.

A member of a hunter-gatherer group living in southern Africa's Karoo Desert finds the egg. She eats it, and cracks the shell into dozens of pieces. Drilling a hole, she strings the fragments onto a piece of sinew and files them into a string of beads.



Ostrich eggshell beads have been used to cement relationships in Southern Africa for more than 30,000 years

She gifts the ornaments to friends who live to the east, where rainfall is higher, to reaffirm those important relationships. They, in turn, do the same, until the beads eventually end up with distant groups living high in the eastern mountains.

Thirty-three thousand years later, a University of Michigan researcher finds the beads in what is now Lesotho, and by measuring atoms in the beads, provides new evidence for where these beads were made, and just how long hunter-gatherers used them as a kind of social currency.

In a study published in the Proceedings of the National Academy of Science, U-M paleolithic archaeologist Brian Stewart and colleagues establish that the practice of exchanging these ornaments over long distances spans a much longer period of time than previously thought.

"Ostrich eggshell beads and the jewelry made from them basically acted like Stone Age versions of Facebook or Twitter 'likes,' simultaneously affirming connections to exchange partners while alerting others to the status of those relationships."

Lesotho is a small country of mountain ranges and rivers. It has the highest average of elevation in the continent and would have been a formidable place for hunter-gatherers to live, Stewart says. But the fresh water coursing through the country and belts of resources, stratified by the region's elevation, provided protection against swings in climate for those who lived there, as early as 85,000 years ago.

Anthropologists have long known that contemporary hunter-gatherers use ostrich eggshell beads to establish relationships with others. In Lesotho, archeologists began finding small ornaments made of ostrich eggshell. But ostriches don't typically live in that environment, and the archeologists didn't find evidence of those ornaments being made in that region—no fragments of unworked eggshell, or beads in various stages of production.



Archeologists at rock shelters in Sehonghong

Read the full article at <https://popular-archaeology.com/article/stone-age-likes-study-establishes-eggshell-beads-exchanged-over-30000-years/>



LESOTHO: A Quiet Mountainous Country is a Wonderland for Adventurers



Lesotho Travel — Where Would You Like to Go?

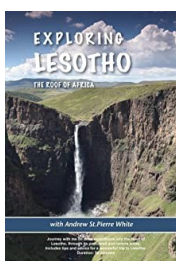
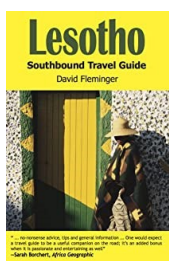
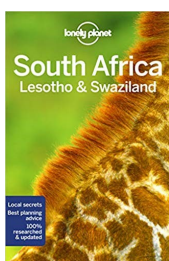
The New York Times Travel Section recently listed Lesotho as one of 52 *Places to Go in 2020*.

Joao Silva/ The New York Times

"The tiny country of Lesotho — a picturesque enclave of jagged desert mountains fully surrounded by South Africa — has been lost to most African itineraries. But things are changing in landlocked Lesotho, known as the "mountain kingdom," where most residents, dressed in colorful traditional wool blankets, live in remote rural villages. Over the past decade the number of visitors has nearly doubled as the country has begun promoting tourism to grow its economy. A newly launched e-visa platform is making visiting easier than it was before. Visitors can explore ancient rock paintings at UNESCO-listed Maloti-Drakensberg Park, or take multiday pony treks to stay in remote thatch-hut villages. (Outfitters such as solar-powered Malealea Lodge arrange trips.) And in 2020, the capital,

Maseru, is scheduled to open a new National Museum and Art Gallery in a three-story building shaped like a spiral aloe, an endemic plant. It will feature exhibits on Basotho culture, its handicrafts tradition and the nation's first-ever digitized archives." <https://www.nytimes.com/interactive/2020/travel/places-to-visit.html>

Can't Travel to Lesotho but are interested in the possibilities? See what may have changed since you left Peace Corps Lesotho.



amazon smile
You shop. Amazon gives.

SHOPPING?? PLEASE USE FOL'S LINK TO AMAZON

Find the link on FOL's website: <http://FriendsOfLesotho.org>



Ways to Support FOL

HELP FOL WITH YOUR EXPERTISE AND TIME

Board Service

- ◆ If you've always wondered how you could give a little more to FOL, now is the chance to volunteer your time, special skills, and enthusiasm. The members of the Board of Directors of Friends of Lesotho are elected based on their ability and willingness to contribute to the achievement of the organization's goals and objectives.
- ◆ Directors are members in good standing who are elected on their ability and willingness to support the purpose of FOL
- ◆ Nominations are welcome year round
- ◆ Elections are held at the Annual Meeting in October
- ◆ Directors serve for two-year terms

Committees and Task Forces

FOL members who do not wish to make a long-term commitment to the board are encouraged to:

- ◆ Join standing committees, or
- ◆ Work on special projects which match their skills and interests to the needs of the organization

There are also committees and task forces that help carry out the Board work. These committees include Donation Distribution, Membership, Fundraising and Board Nominations & Development.

Check out the [Board Information](#) page. Also, for a summary of the expected level of commitment see the [Board and Committee description of work](#). If you're interested in application or nomination, please complete the [Nominating Form](#) and email it to the address shown within the form. If you have any questions, please feel free to contact any of the committee members.

ATTEND FOL MEETINGS

Board Meetings

- ◆ Meetings are held at 8pm Eastern on the third Sunday of odd numbered months. Minutes are posted about one week after each meeting.
- ◆ Meetings are open to all FOL members, please contact [John Hollister](#) for call-in information.

FOL Annual Meeting

- ◆ Scheduled close to Moshoeshoe Day in March, via teleconference, more information to follow on our website. Be on the lookout for your 2019 FOL Annual Report posted on our website following the Annual Meeting.





Be an FOL Member for FREE!

Richard Rowan, RPCV Lesotho, qhomaki@mac.com

Hello, Bakhotsi! Your friendly FOL Membership Committee Chair Richard here.

As mentioned in the last FOL newsletter, Friends of Lesotho stopped collecting the mandatory \$15 yearly membership dues starting in January 2017.

[What do FOL's free dues mean for you?](#)

If you're currently a member of Friends of Lesotho:

You don't have to do anything. Your membership automatically renewed.

If you used to be a member but are no longer a member:

Take two minutes to fill out the updated [membership form online](#).

If you've never been a member:

What are you waiting for? There's never been a better time to start getting involved!

With membership fees in the rear view mirror, we need your help more than ever to continue doing the amazing work Friends of Lesotho does in Lesotho.

Amazon will donate money to Friends of Lesotho when you shop. Join Amazon Smile (smile.amazon.com) and add Friends of Lesotho as a beneficiary. Remember to use Amazon Smile when you shop on-line.

Get involved with one of the many committees in FOL.

Donate generously to our many projects, using the [form online](#).

And Remember :

We couldn't do and support the work, have the impact, and save the lives we do without your financial support. Your contributions support our work in:

- ◆ HIV/AIDS
- ◆ Orphanages
- ◆ Tuition Assistance including Memorial Scholarships
- ◆ The Morija Museum
- ◆ Peace Corps Volunteer Projects
- ◆ Community Development Projects
- ◆ Other types of projects as new opportunities arise

We work because you give.

Whether it's \$5 or \$5,000, all donations help us reach further and save more lives and because we're a registered 501(c)3, your donation is tax deductible!

If you'd like to give, please go to: <http://www.friendsoflesotho.org/donate/>



Follow us on Facebook:

<https://www.facebook.com/FriendsofLesotho>



Share your photos!

Send to editor at kfreer49@gmail.com



Follow us on twitter:

<https://twitter.com/FOLesotho>



Visit our website:

<http://www.friendsoflesotho.org>



Newsletters Past and Present—The FOL Newsletter, *Metsoalle ea Lesotho* is posted on our website homepage (<http://friendsoflesotho.org>) each quarter of the year. The complete set of newsletters is available on our website from Issue Number One, Summer, 1987 to the present. Go to Membership > Newsletters for the archives.

Submit Newsletter Articles—Pass on RPCV updates. Recommend a Mt. Kingdom movie, music, book or Website. Share new or old photos. Been to Lesotho lately? Share it!

Submit articles, photos, or information of interest to our members to:

Kevin Freer, FOL Newsletter Coordinator kfreer49@gmail.com



Treasurer's Report

Friends of Lesotho - 2020 Treasurer's Summary for Board:		May 17, 2020	
		<i>most recent activity:</i>	
<i>(Jan-2019 = Start of CY Accounts)</i>	1/22/2020	5/5/2020	Difference
Total (all accounts including Paypal pending):	\$28,934.43	\$59,615.57	
minus minimum balance for operating/contingency:	<i>(\$10,000.00)</i>	<i>(\$10,000.00)</i>	
<i>Pending expense (approved still to be sent)</i>	<i>(\$4,000.00)</i>	<i>(\$4,000.00)</i>	
Money available for Project expenses:	\$14,934.43	\$45,615.57	\$30,681.14
<i>Notes: 1) Min checking balance of \$2000 needed to avoid monthly fees, 2) Min Savings balance of \$5000 needed to earn interest.</i>			
Project Expenses year to date:	\$0.00	\$5,000.00	\$5,000.00
2020 Breakout project cash sent (all fees under operating):		\$5,000.00	=Total Below
Lesobeng Itjareng Chicken Project - wire	1/22/2020	\$4,000.00	PCPP total breakout:
Lesobeng Itjareng Chicken Project - wire bounced	2/19/2020	-\$4,000.00	\$0.00
<i>Itjareng - \$303.03 loss due to exchange rates (operating expense)</i>			PCPP TAP breakout:
Morija Pantry Project (via LNI) - chk192 incl add'l \$50 credit card fee	5/4/2020	\$1,000.00	\$0.00
Pending Project Obligations:			
Lesobeng Itjareng Chicken Project		\$4,000.00	
2020 Operating Expense Status:			
Unused Expenses in 2020 Budget -		\$4,407.94	
Current Cash Reserve ((i.e., \$10k - remaining budget) =		\$5,592.06	
(Total operating cash expenses):		\$1,367.06	
(Total operating inkind expenses to date):		\$4.80	operating expenses only



FRIENDS OF LESOTHO

115 Monterey Avenue
Oakwood, OH 45419



METSOALLE ea LESOTHO

Second Quarter 2020
Newsletter



FRIENDS OF LESOTHO

President: Scott Rosenberg (srosenberg@wittenberg.edu)

Vice President: Bill Moore (litapole@gmail.com)

Secretary: Kevin Caughlan (caughlan@earthlink.net)

Treasurer: John Hollister (johnh@zapdoodat.net)

Board Members: Cayla Anderson (cayla.a23@gmail.com)

Rachel Edmonds (redmonds48@gmail.com)

Marisa Ernst (ernst.marisa@gmail.com)

Kevin Freer (kfreer49@gmail.com)

Jennifer Jiggetts (jenjiggetts@gmail.com)

Ali Kukovich (ali.kukovich@gmail.com)

Emma Mcevoy (e.mc.evoy05@gmail.com)

Tishina Okegbe (tokegbe@gmail.com)

Rory Pulvino (rapulvino@gmail.com)

Richard Rowan (qhomaki@mac.com)

Danielle Sharp (danielle.m.sharp@gmail.com)

Andrew Steele (andresteele2@gmail.com)

Meghan White (white.meghan0@gmail.com)

Newsletter Team: Kevin Freer, Editor (kfreer49@gmail.com)

Nicole Potsane, Graphic Designer

Mary Howard, and Deena Lawrence, Copy Editors

Ella Kwisnek, News from Lesotho

Social Media: Ali Kukovich and Megan White

Website: Marty Smith