

Metsoalle ea Lesotho

Fall 2005

Friends of Lesotho Newsletter

Friends of Lesotho

4110 Denfeld Ave

Kensington, MD 20895

www.friendsoflesotho.org

President's Message

Please plan to attend our Annual Meeting Teleconference on Sunday, October 16th! If you ever wanted to be more involved, more informed, or just wondered what we were up to, this is a great place to start. No obligation – just listen in, or join the conversation if you wish. See the listing of speakers and topics, as well as how to call, page 3.

As I look through the articles in this newsletter I'm impressed with the variety of topics. There is news of Lesotho, projects for those seeking to assist and notes about the activities of members. Each of these items has been the result of individual effort by many people. There are still areas where we could improve and expand, but I want to pause and say "thanks" to all those who have contributed their time and creativity. Next month at the Annual Meeting we look forward to welcoming additional

Board members. With each new Board member come new skills and new ideas. As I wrote last time, this is a Board that works, and the variety of interests and background of these new members bring is an opportunity to do more for Lesotho. A "thank you" also goes out to these candidates for offering their services.

According to our by-laws, the Board may consist of between five and fifteen members. We presently have nine Board members with one resigning at the end of the year. Eight new

candidates would be needed for this to be a competitive election, which is why voting "for" one candidate is not voting "against" another ... just in case you were wondering. See the ballot later in the newsletter to cast your vote.

Richard Rowan has recently returned from a personal visit to Lesotho. Richard and I served together in the late 1970's, and while we now are in contact as a result of work with FOL, the last time I actually saw him was in Hlotse 25 years ago. Richard tells me that he took some FOL newsletters with him to pass out to PCVs and was surprised that most had already seen them. I didn't know that they had gotten that kind of circulation either, but what an opportunity! PCVs: need help with a project, World-wise schools coordination, technical know-how? Write to us. RPCVs: have a special skill or a class you'd like to introduce to Lesotho? Write to us. There's a lot we can share in both directions.

Projects aside, it's satisfying to have the feeling of community between PCVs and RPCVs. Whether back home for years or only a few months, who among us wouldn't agree that it was one of the best times of our lives? A PCV in Matsonyane wrote to me recently that a group had just COS'd – and suddenly she became aware that her group would be next. But I only just got here! It really brought back strong memories of my own departure from Lesotho. Was it the right thing to do? Should I have stayed? What happened to all those people I used to know? There aren't any answers to these questions – but it's why I'm here today writing this letter, and possibly why you're here reading it.

Keep in touch,

Bill Dunn (RPCV 79-82)

wdunn@friendsoflesotho.org

President
Bill Dunn
Vice President
Kevin Freer
Treasurer/Membership
John Hollister
Secretary
Ella Kwisnek
Database/Web/Inquiries
Bill Dunn
Board Members
Martha Munson
Richard Rowan
Patrick Davenport
Jim Mueller
Claire Hilger
Newsletter Editor
Dorothy Holland

The African Library Project: We Need You RPCVs!

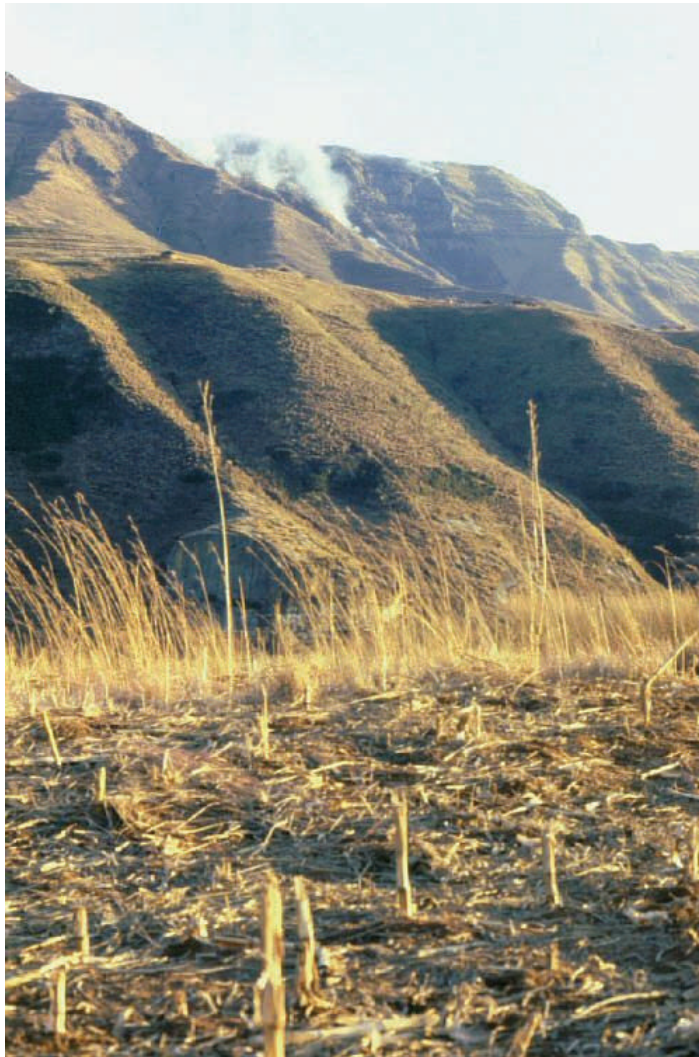
A new all volunteer organization, the African Library Project, has been working to create and improve small libraries in Africa. During the past year, partnering with Peace Corps and local community volunteers, the African Library Project has started six libraries in Lesotho with another 47 under development in Zambia, Zimbabwe, Cameroon and Lesotho. Forty three of these proposed libraries will be located in Lesotho and working with the following communities/PCVs: Malealea Valley/Mary Ann Eiseman, Thaba-Bosiu/Maia Longnecker, Sekakes/Kate Miller, Qhalasi/Miranda Lopez, Mohlanapeng/Jill Salvatore, Mantsonyane/Erin Finn, Mafeteng/Susan Bruckner, Kingsgate/Gareth Lacy, Thaba Tseka/Brian Mehlhoff, and Leribe/Ruth Giorango.

The method of building these libraries is simple and direct. PCVs, after agreeing to have met some

basic requirements, make direct requests of the African Library Project for the types of books their community/school would like. The African Library Project organizes schools and other organizations in the United States to run book drives to collect gently used books of the type requested. The books collected are sorted, packed and shipped directly from the U.S. donor organization via M Bag to the PC Country Headquarters, who get them through customs duty free. PCVs arrange for transportation from Maseru to their local community. Some U.S. schools use the library project as a springboard to form a deeper relationship with an African school. The African Library Project encourages the U.S. schools and organizations to learn more about Africa during the book drive. U.S. students are naturally curious about why Africans would need books.

Active PCVs are critical to making this project work, but support in the U.S. is just as important. The African Library Project appeals to RPCVs to help with the project. Familiar with the job of a PCV and life in Africa, RPCVs are in a uniquely knowledgeable position to help. One way is to sponsor a library by running a book drive at a local school, church or other institution or organization. Sponsoring organizations are responsible for collecting, sorting, packing and shipping the books including raising the money for shipping costs. The African Library Project also welcomes donations to help with shipping costs or purchase books published in Africa that are written and illustrated by Africans to supplement the donated books. A special need is for RPCVs who have a background in library science to act as technical assistants online to the current volunteers who are setting up libraries.

To learn more about how the San Francisco-based African Library Project got started and how it operates, visit www.africanlibraryproject.org or call founder Chris Bradshaw at (650)851-3640.



Annual Meeting Announcement

The Annual Meeting of Friends of Lesotho will be held via teleconference on Sunday, October 16th, 2005, at 1 pm Eastern Time. The meeting will feature a representative from the Embassy of Lesotho in Washington D.C. and a recently returned Peace Corps Volunteer, Mary Ann Fuetz. As members of Friends of Lesotho, you are encouraged to participate in this event, especially if you have not done so in the past. However, there are a limited number of lines available for the Annual Meeting Conference Call. In order to ensure enough lines, please RSVP to John Hollister (zapdoodat@erols.com) before Friday, October 14th.

Friends of Lesotho Annual Meeting Teleconference

Sunday, October 16th, 2005, 1pm EST

1-605-528-8855

access code 16102005

Agenda can be found: www.friendsoflesotho.org/2005agenda.doc

While in the conference please press "6" to toggle mute to help keep down the background noise.

There are a variety of regional "get-togethers" being held for the Annual Meeting. Faye (Arizona) and Kevin (Florida) are each hosting a regional party. Please contact either of them (via the Friends of Lesotho website) for more information on their plans for regional parties. If you are interested in contacting other Friends of Lesotho in your region please contact Martha Munson (khotsocv@hotmail.com).



Another Annual Meeting

Listen to the Language

Want to listen to a splendid recording of the book that was reviewed in our last newsletter? George Cromer (of Lesotho/Malawi/kwaZulu Natal and Earthwatch 2000) suggests the audio book version of **The Kalahari Typing School for Men**. "The

narrator is the South African actress Lisette Lecat who has a great facility for accents and captures Mma 'Precious' Ramotswe very well." You can purchase this title and others at www.recordedbooks.com.

Lesotho Information on the Web

Google News

Google offers a couple of ways to keep current on news about Lesotho. One way is to search for "Lesotho" on the Google news page. At the bottom of the results you have the opportunity to set up an "email alert" for "news about Lesotho." This is a recurring daily email that contains headlines and links for news stories about Lesotho.

A second way is to customize the Google news page. To do this, open up the Google news page. In the upper right portion of the screen are instructions about how to customize the news. You can set your preferences so that every time you open Google news, links to stories about Lesotho will be included on the page.

Submitted by Richard Rowan

Lesotho RPCV Listserv

Listserv: an automatic mailing list where members sign up to receive emails on a common theme. When an e-mail is addressed to a listserv, the message is delivered to everyone who has joined the group. The Lesotho RPCV listserv is operated through Yahoo Groups. To join, you

must create a username and password that is used solely to access that group. Visit <http://groups.yahoo.com/group/lesothorpcvs/> or send an email to lesothorpcvs-subscribe@yahoogroups.com.

Current news articles on Southern Africa and Lesotho (Thanks to Bruce S. and the Lesotho RPCV listserv): <http://www.topix.net/world/lesotho>



Map Painting

When I arrived at my primary site at Mantsonyane, I learned that volunteers in the Education intake group before mine had been trained to paint maps on schoolroom walls. Even though I had missed that training, I felt it was an important project, so decided to 'wing it' on my own. An Irish lass teaching up the road from my village had been involved in painting maps on her schoolroom walls, but hadn't been able to finish. I helped her complete them.

As a teacher-trainer, I was given responsibility for mentoring 8 teacher students at both my sites (Mantsonyane and Lesobeng). Some of them had heard of the map project, and begged for me to do maps in their village schools. I required that a particular square or rectangle had been smoothed and painted a light color before I arrived. I had the school pick students that would be helping with the

map project. They measured latitude and longitude lines, and by a process of triangulation, marked outlines, which were converted to boundaries.

I did take some of the paints, and brushes, although in one village, I had none with me, as I was not expecting to paint. The village chief had heard I was coming to observe my student, and decided that I would paint a world map. HA!! I had nothing with me, so it was done from memory. He was happy with it, although I think it was the funniest-looking world map I ever saw!!! You can pick it out of the collection!! Many of the paints for that map came from village homes, and from plants.

It was a grand experience being able to offer this project to villages. Sala Hantle!!

Elizabeth Perry (RPCV '97 – '99)

MOHALE'S HOEK Private Clinic Lesotho

There were three private doctors serving Mohale's Hoek. Dr. Charles, his wife Dr. Pinkie and Dr. Dave Moshoeshoe. In December 2003, Dr. Dave died from an asthma attack when Drs Charles, Pinkie and a RN were unable to get access to the Mohale's Hoek hospital to get oxygen. The gates to the hospital were locked and the person with the key was not available, when they finally got in the hospital grounds the oxygen was locked up and the person with the key could not be found; Dr Dave died in Dr. Charles' arms.

Dave was a good friend of Charles and Pinkie. His death devastated them. As a result, Charles and Pinkie have built and furnished their own emergency clinic to prevent this type of death happening. Charles thinks the actual rate of HIV/ Aids in Mohale's Hoek District is closer to 75% rather than the official rate of 33%. While he is generally an upbeat person, understandably the number of deaths can be overwhelming and thus the "lost kingdom of Lesotho".

A brief glimpse of these doctors' lives and determination follows.

Jim Mueller (RPCV '03 – '05)

We are a couple (Drs Makhube & Manamolela) running a private clinic in rural Lesotho.

We started our practice ten years ago, occupying three rooms at the corner of our house. This initially served only the district of Mohale's Hoek. We have, to date, grown into a private clinic serving the entire Southern Districts of Mafeteng , Mohale's Hoek, Quthing and Qacha's Nek with the average population of 700,000.

Our corner of the world, our corner of Lesotho do not YET need a large specialist hospital. We need to deliver a service that is compassionate, prompt

and of primary care. We have identified the challenges that parade our health care system; in areas of emergency medicine with intensive care component and primary trauma care.

We hope, in the near future, to put together a facility that will have an ambulance to recover patients from their homes and accident scenes; resuscitate and refer them to the larger centers (mainly in the Republic of South Africa). At the moment our center runs 24 hrs and has maternity service, outpatient and trauma. We are also building a laboratory component.

By the way, we bought two cervical collars and four chest drains last month .We are in the process of purchasing a scoop board (for spinal injuries). We are arranging with some of the Republic of South Africa hospitals to have attachments for the purpose of getting continuous education.

This script is meant for and can only be understood by friends of Lesotho .The friends of the friends of Lesotho can not imagine any situation lower than rescue 911 as seen on TV. We know that you miss the simplicity in which we do things in this, THE LOST KINGDOM OF LESOTHO.



Photos in this issue are courtesy of Bill Dunn and Richard Rowan. If you have photos you'd like to share, email them to Faye Farmer, f_e_@hotmail.com.

Thanks to Faye Farmer for pulling together all the articles and information for this newsletter.

Friends of Morija Museum and Archives

This article is a summary of a longer piece, which also contains an application to become a Friend of Morija Museum, that can be found at www.friendsoflesotho.org.

The Morija Museum is celebrating its 50th year of operation, with a celebration to kick off the 7th Annual Morija Arts and Cultural Festival, beginning this month. The event will publicize the release of a new publication, "The Story of Morija Museum & Archives" by Stephen Gill, engender support for the Phase II expansion plan for the museum, and announce the restoration of the Friends of Morija Museum, with Motlatsi Thabane, a lecturer in history at the National University of Lesotho, as Interim Chair.

The Phase II expansion of the Morija Museum involves an architectural plan and design of new exhibits, including the collection/purchase of additional artifacts and artwork. Moreover, multimedia presentations and interactive displays will be developed. These will enhance the new

exhibits so that visitors will experience more of the texture and dynamics of Lesotho's history, culture and environment. Morija Museum & Archives is seeking a suitable partner(s) to fund this project which requires R2.5 million/US\$400,000.

The Morija Museum seeks to develop its funding to support the following goals:

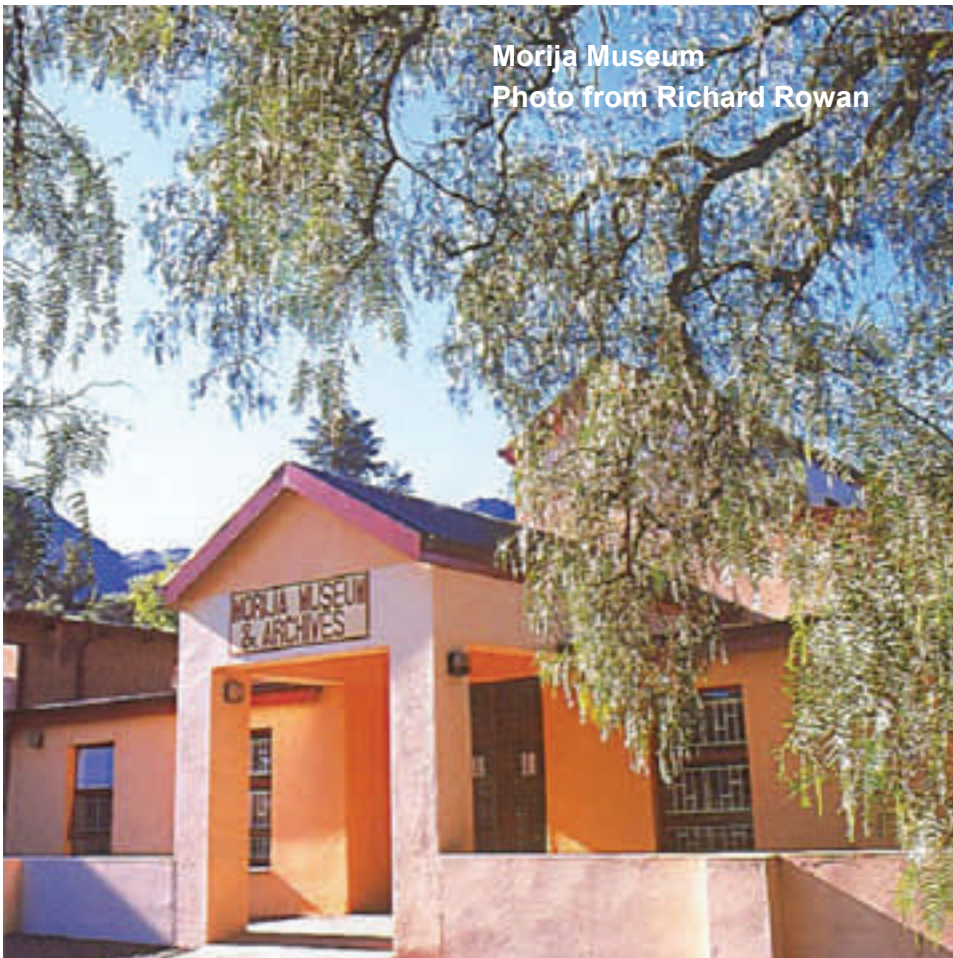
Morija Museum Trust Fund

The Morija Museum Trust Fund was started in 1991 (Lesotho Law Office Register No. 22495). It has raised considerable donations and with the increase in dividends has now accumulated over R270,000 (US\$43,000) in investments. Certain income earned on this investment portfolio is paid over on a quarterly basis to assist the Museum with programme development and on-going maintenance. Further donations are sought in order to double the size of the Trust Fund over the next three years.

Enhancing Educational Outreach Programmes

1. Production of multi-media presentations/ documentaries on cultural, historical and scientific issues. Already the Museum has edited previous video materials concerning certain cultural practices and performances, and these are being appreciated by local teachers. Either through editing of existing materials or the production of new materials, a great deal more can be done to make certain important thematic material come alive to students of various ages.
2. Purchase of a Museum vehicle in order to take Museum personnel out to schools in order to teach/show documentaries, etc. Already, on an experimental basis, we have visited three local schools with very encouraging results. And teachers from schools further away are asking us to visit their schools with the same

(Continued on page 7)



Friends of Morija Museum and Archives (cont)

(Continued from page 6)

presentation. Because of the rising cost of transport and the new policy of Free Primary Education, it is easier to persuade school authorities that students pay a nominal fee of R 2 per child for our presentation (part of which goes back to the school as a contribution to its development) rather than the teachers trying to organise a trip to the Museum, which costs more and benefits fewer students.

3. Production of short student workbooks to go together with the multi-media presentations.

Many members of FOL have had a personal connection to Morija Museum in one way or another over the years or have heard about its work through other friends. As such, they cherish and value the work being carried out, whether this be through the Museum's educational and school outreach programmes, research and publishing, tourism-related activities, restoration of Masitise Cave House Museum, or the annual Morija Arts & Cultural Festival. We therefore make an appeal that members of FOL join the Friends of Morija Museum and help us in our growing work.

If you are interested in supporting the goals of the Morija Museum, please send a contribution to Friends of Lesotho, specifically indicating Morija Museum as the recipient. Donors will have the option of choosing a book or DVD as a thank you gift from the museum for a donation of \$75 or more. As donations are received by FOL, they will be transferred electronically to the Museum account. Donations may be designated for a particular project, see above, or left to the discretion of the Museum. Annual reports will be issued to show income received, and the work that has been carried out with it.

For more information, please contact Richard Rowan (richard.rowan@courts.state.mn.us) who serves on the FOL Board, or Joan Eckberg (lerol1@hotmail.com) who was a recent Peace Corps volunteer at Morija Museum, or Stephen Gill (sgill@morijafest.com) the Museum Curator or the Morija Museum website (www.morijafest.com).

Thank you for your support.

Stephen J. Gill, Curator of the Morija Museum

Mants'ase Children's Home

Miranda Lopez is approaching her 3rd year as a Peace Corps Volunteer assigned to Mants'ase Children's Home in Mohale's Hoek District in Lesotho. When she arrived there were 26 children, the youngest 7 years old. The buildings were old, built in the Basotho style with rocks and a mixture of mud and cow dung for mortar. The floors were the same mortar. Three of the buildings had old thatch roofs, the others had tin roofs with no ceilings.

During these years there have been many changes. There are now 41 children with 10 under the age of 9. A building has been renovated to include two washrooms, a kitchen (with running water) and a dining room. A solar system for lights has also been fitted to all the houses. The floors have all been cemented, all the walls painted a sunshine yellow, a playroom and storeroom have been created and a new dormitory is almost

completed. Power lines may soon bring electricity. The gardens have been expanded and are flourishing. Greenhouses allow them to grow some food in winter and get a head start on seedlings. There is also a rabbit house for 20 rabbits. The small farm also now has two milking goats and 20 laying hens. A perimeter fence was installed and helps protect the garden from theft.

Mants'ase also has some small income-generating activities that allow the purchase of craft materials and finance school trips. A small library has been started and a stock of videos helps motivate the children do their chores so they can watch a movie on Sunday.

There is now a web site (www.mantsasechildrenshome.org) where you can learn more of the history of Mants'ase and meet the children who live there.

Committee Updates

Fundraising

Leaving a Legacy to Friends of Lesotho Inc.

Friends of Lesotho is pleased to offer its members a *Wills and Estate Planning Information Kit*. This *Kit* is designed to help our members and friends include Friends of Lesotho Inc. in their wills and estate plans. Of course, your gift will depend on your goals, assets, family considerations, and charitable interests

You will feel a great sense of satisfaction and relief when your Will or Trust is completed. This *Kit* will help you take the first steps toward that goal. It includes:

- Information from the American Bar Association on basic estate planning
- A copy of the Florida Bar Association's "Why You Need a Will" pamphlet
- An Estate Planning Inventory Form to help you get a clearer notion on the worth of your estate
- Information on how to remember Friends of Lesotho Inc. in your Will
- Application for membership in *Metsoalle ea Lesotho*, a group of like-minded individuals who have made a contribution to Friends of Lesotho Inc. in their estate plans.

Friends of Lesotho Inc. wants you to have effective estate plans: Wills and/or Trusts that are properly worded, signed, witnessed, and not contradicted by other binding arrangements you may have made. Effective estate planning usually takes time, effort, and a good attorney, but in the end your plan will allow your family to avoid the delay,

dissension, and needless expense that often occurs when a loved one dies without an estate plan.

Once you have taken care of your family's needs, please consider a thoughtful bequest to our organization. Bequests are critically important to the mission of our organization. They provide a source of support that will continue our work in Lesotho for years to come. Bequests come from individuals who would like to leave a legacy and lasting gift to the people of Lesotho.

For more information, please contact John Hollister, Treasurer, at 301-942-2751 or zapdoodat@erols.com. Thank you for your generous support.

Finance Committee

As of the end of August 2005, Friends of Lesotho has sent over \$5,000 to Lesotho. If you wish to contribute your time and talent to this committee, please contact John Hollister (zapdoodat@erols.com).

Happy Birthday to me!

Are you looking for an interesting way to celebrate your special day? Have your friends make a donation to Friends of Lesotho in your name!

Membership

Bumper stickers are available to interested members. Contact Friends of Lesotho to get yours. And our membership forms have been updated! Renew your dues today! Just \$15!

Future articles

Do you know of a great website? Have you given a talk about Lesotho? Have you visited Lesotho recently? Do you know where to find the best Basotho music? Do you have a fabulous photo of your time in Lesotho? If you have answers to these questions, or answers to questions people have not thought to ask, send the Friends of Lesotho Newsletter a brief article about it! We reserve the right to edit submissions, but are really interested

in collecting information from our community for the community. Submit your articles, photos, or blurbs to Faye Farmer, FOL Newsletter Coordinator at f_e_@hotmail.com, or send hard copies to 2612 E. Geneva Drive, Tempe, Arizona 85282. The next newsletter will be the annual report, thus submitted articles will be published in the Spring Newsletter. Submissions are due March 1st, 2006.

Where Does That Money Go?

The PC Lesotho Volunteer Advisory Committee (formerly the VLC) uses money donated by Friends of Lesotho to fund PCV projects. In August, I had the chance to meet with several volunteers who were involved in some of these projects. They all expressed deep appreciation for the help they've received from FOL. It's also very obvious that the need is very great and PCVs have many great ideas and know how to put the donations to good use. Here is a sampling of projects that FOL has helped fund.

Susan Edwards used a 500 Maluti grant (approx \$80) to help educate members of a support group for people living with HIV/AIDS about starting income generating projects. Income generating projects are vital to the people in the group because many of them do not have enough income to meet their basic needs. The grant Susan received was used to provide transportation, materials and a consultant fee for an expert in business and income generating projects. This meeting laid a foundation for continuing work by the support group to develop income generating projects among their member at St. Josephs Hospital in Roma.

Marian, another PCV, works at the Good Shepherd Centre for Unwed Mothers. The Centre provides a home for mothers and their children and gives the mothers an opportunity to continue their studies and learn parenting skills. The Center also provides a pre-school.

Among her many duties, Marian has been working at running the pre-school and getting it looking like a pre-school. When I visited the site (on a weekend) Marian and two other PCVs, Ruth and Maria, were painting the walls with paint and materials bought with money donated by FOL.

Dyann Van Dusen has been working to help establish the Lesotho Child Counseling Unit (LCCU) which provides shelter to abandoned and abused children in Lesotho. She has used FOL donations

to help with the establishment of the LCCU. You can find out more about the LCCU on the FOL website, see "Hosted Pages of PCV and Other Projects".

FOL donations play a part in many projects across Lesotho. The volunteers I met with were profuse in their thanks for the support they receive and stressed that they wanted that thanks conveyed to the entire membership of FOL. Members can be assured that their donations are appreciated and are being used to help the people of Lesotho in very real and important ways.

Thanks to Marty Smith and Charles Fogelman for taking time out of their weekend to explain how VAC funds are allocated and to Marty for acting as tour guide on our visit to the Good Shepherd Centre.

Thanks to Susan Colman and her students at the Rowan Middle School in Jackson, Mississippi. Susan Colman is an FOL member and former PCV. She helped her middle school students write and sell a newsletter in their school community. They donated the proceeds from their newsletter to the FOL Tuition Assistance Project. That donation and donations from other members are helping to pay school fees for students in Lesotho.

Richard Rowan (FOL Board member, Lesotho RPCV '79 – '83)



Photo from Richard Rowan

Networking and Updates

The purpose of this section of the newsletter is to combine updates we get with a networking opportunity. Networking is based on the premise that we are more likely to contact and utilize people we have a connection with and the updates are because everyone does something fantastic. To that end, YOU are invited to send "updates" to Faye Farmer, FOL Newsletter Coordinator, via mail or email (f_e_@hotmail.com, 2612 E. Geneva Drive, Tempe, AZ 85282.) Faye reserves the right to edit all submissions.

Hillard Denham was a Peace Corps volunteer in Mauritania ('88-'90). He has recently been appointed as the Lesotho Peace Corps country director, after serving as associate Peace Corps director in Ethiopia, Mali, and Chad. His prior experience was serving as a financial analyst with Coors Brewing Company, Robert Half Finance & Accounting, LaserWave Technologies, Fernstrum Cattle Company, and Bank Western.

Tielima Phakisi worked for Peace Corps Lesotho from January 1997 to January 2003 as Programme Assistant for Agriculture/Community Economic Development (CED). After nearly six years he decided to move on to experience a different challenge. He left Peace Corps in January 2003 to join the British Department for International Development (DFID) as Programme Officer. DFID is responsible for promoting development and poverty alleviation throughout the world. In Lesotho DFID is supporting the government to implement the Poverty Reduction Strategy (PRS). DFID has two large Programmes; the Foundation Programme (poverty monitoring and donor harmonisation) and Priority Support Programme (HIV/AIDS, Food Security, Employment Creation, and Governance). He is project Officer for Poverty Monitoring, Food Security and Governance. After joining DFID he realised he has to broaden his development knowledge, and as a result he enrolled for a two year part time Master's Degree in Development at the University of Orange Free State in RSA. He is due to complete during mid 2006. Tielima is passionate about development work and continues to maintain links with colleagues in the development field. He is currently a Supporters Group member for Skill Share International (A British Volunteer Agency) in Lesotho headed by former Peace Corps APCD Agriculture/CED, **'M'e Palesa Matete**.

Stacey Campbell left Lesotho in October 1998 after serving as a high school science teacher at Hareeng High School in Seforong in Qachas Nek District. Since returning she finished a Masters degree to become a Physician Assistant (2004). She is working at a migrant community health clinic where she provides healthcare to a Hispanic medically underserved population. **Todd Dierker** wrapped up service at St. Martins Secondary

school in October 1998 where he taught science, English and hacky sack. He returned to Colorado and taught at Denver Academy, a private school for students with learning differences for three years. He completed a Masters' degree in Environmental Education in Portland, Ore. Stacy and Todd were married in 2000, and the couple welcomed their first son Riley in June 2004. The Dierker-Campbell family currently resides in Othello, WA.

After leaving their microenterprise project at the Farmers Training Center in Qachas Nek, Lesotho in July 1999, **Karan and Willy Schreiber** took a trip around the world eventually ending up back in Los Angeles. Within a year the Peace Corps bug hit them again. They applied for another Peace Corps assignment and in May 2001 were sent to Panama. They lived in the indigenous community of Ipeti Embera, while in Panama, where they started an environmental tourism program and artisan crafts store. Unfortunately, their time in Ipeti Embera was cut short due to family emergency back home in the states. They returned to Los Angeles but in August 2004, they once again packed up their entire house. This time they shipped everything to the small Caribbean island of Bocas del Toro, Panama, where they currently reside and are busy building a B&B on the beach.

Julie Faulkner, agriculture volunteer, and **Mark Lancaster**, secondary education volunteer, met in Lesotho in 1998. In the past 7 years, they have traveled the world immediately following Peace Corps and they have worked together for Visions Service Adventures in Montana and South Carolina. They lived in the mountains of Southern California while working in the field of outdoor education as well as on the coast in Northern CA. Julie has since completed a Master's degree in Education and received her teaching credential, while Mark has been teaching various subjects in 6th - 12th grades. During the summer Mark is working for the National Outdoor Leadership School while Julie teaches at a local community college while being a mom. Oh yes, during this time they also got married, had a child, and moved to Flagstaff, Arizona.

Richard Rowan served in Lesotho from 1979 to 1983 as an NTTIC Intern Supervisor. His sites were 'Mamohau and Hlotse. He and his wife Tlotlisang live in St. Paul, MN and are parents to four children. Richard works for the Minnesota Supreme Court as a systems analyst responsible for data integration between the court system and other state agencies. Richard and his family are planning a trip to Lesotho in July. He is a member of the Friends of Lesotho Board and is chair of the Donations and Distributions Committee.



MEMBERSHIP FORM

Friends of Lesotho is a non-profit organization promoting friendship between the peoples of Lesotho and North America. Friends of Lesotho (FOL) provides scholarships and grants to small development projects in Lesotho, assists in locating old friends from Lesotho, and provides information about current events in Lesotho.

Name:¹ _____

Address: _____

Home Phone: _____

Work Phone: _____

Email: _____

List email on website? Yes No

Were you a Peace Corps Volunteer? Yes No

Years in Lesotho: _____

Village: _____

District: _____

Information for FOL Directory:
Current Occupation/Employer: _____

Family Members: _____

Matching gifts can enable you to double or even triple the value of your contribution. Many companies match their employees' personal donations. If your company is eligible, request a matching gift form from your employer and send it completed and signed with your gift, we will do the rest.

Why join FOL?

- **Make a difference in the lives of Basotho**
- **Keep abreast of the latest news about Lesotho via a quarterly newsletter**
- **Join a group of likeminded people**

Annual Membership: \$ _____
(\$15.00 per person)

Additional Contribution: \$ _____

Please indicate how you would like your additional contribution allocated:

- HIV/AIDS Tuition Assistance Program
- Orphanages Volunteer Liaison Committee
- Wherever the need is greatest Morija Museum

Total to FOL: \$ _____²

Annual Membership in the National Peace Corps Association is \$35 per individual and \$42.50 per family.³
\$ _____

- Please check if you would like more information on other ways to give, such as wills, estate planning, IRAs, or listing FOL as an insurance policy beneficiary.

Please mail your completed membership form to:

Friends of Lesotho
4110 Denfeld Avenue
Kensington, MD 20895
Phone: (301) 942-2751

- 1) Unless you specify otherwise, FOL will provide your name and address to an individual requesting information about an old friend or to a prospective volunteer to Lesotho. If you do not want your name released to organizations, please mark as appropriate here: a) Organizations selling merchandise and publications b) Professional organizations concerning employment c) Other non-profit organizations
- 2) Friends of Lesotho is a registered 501(c)(3) organization. Contributions are tax deductible to the extent permitted by law.
- 3) Friends of Lesotho (FOL) is affiliated with the National Peace Corps Association (NPCA). If you have included NPCA dues in your payment, we will forward them to NPCA. If, however, you choose to send your FOL dues directly to NPCA in response to their membership solicitation, you must specify FOL as your choice of affiliated group to receive the credit for dues. NPCA membership is optional. NPCA multi-year discount available, see www.rpcv.org.

For FOL use, please do not complete this information:

Check # _____ Amount \$ _____ Member Since _____ New _____ Source _____

Renew Date _____ Expires _____ No. of Members _____ NPCA _____

Friends of Lesotho

Friends of Lesotho
4110 Denfeld Ave
Kensington, MD 20895

www.friendsoflesotho.org
Phone: 301 942-2751
Email: wdunn@friendsoflesotho.org



WE'RE ON THE WEB!
WWW.FRIENDSOFLESOTHO.ORG



Annual Meeting
Oct 16
Via PHONE
See page 3

Inside this issue:

President's Message	1
African Library Project	2
Annual Meeting	3
Listen to the Language	3
Lesotho On the Web	4
Map Painting	4
Mohale's Hoek Clinic	5
Friends of Morija Museum	6
Mants'asa Children's Home	7
Committee Updates	8
Where Does That Money Go?	9
Networking	10
Membership Form	11