

25th

1986-2011

Anniversary

*making a difference
at the grassroots level*

FRIENDS OF LESOTHO

ANNUAL REPORT for 2010



Friends of Lesotho, Inc.
4110 Denfeld Avenue
Kensington, MD 20895
www.friendsoflesotho.org

25th FRIENDS OF LESOTHO Anniversary



LUMELANG METSOALLE EA LESOTHO,

2011 marks the twenty-fifth anniversary of Friends of Lesotho. Thanks to the generosity of our members and donors, our financial position is healthy and we continue to provide assistance to the people of Lesotho.

This is the first annual meeting held in March instead of October. The change helps our annual reports to better coordinate with our fiscal year. FOL continues to make financial contributions to many PCV projects and provide tuition assistance to Basotho. At the request of Peace Corps, we now fund those projects through the Peace Corp Partnership Program instead of sending checks directly to PC Lesotho. The new process provides FOL with more detailed reports and accountability.

The Donations Committee report gives details about fifteen scholarships for student nurses, contributions to the Laptops to Lesotho project run by FOL member Janissa Balcomb, funding for The African Libraries Project to help establish community libraries in Lesotho, and other projects FOL has helped support over the past year.

Since the last annual meeting, there has been a redesign of the FOL website which has given FOL a new look and makes it easier to join or renew membership, make donations, and purchase items from our online store.

In the coming year, FOL will continue to support projects in Lesotho. We will also continue to update how we stay in touch with each other by making more use of electronic media, and we will be completing planning for an FOL reunion in conjunction with the Peace Corps 50th anniversary celebrations in September, 2011. We hope as many members as possible will plan to attend.

Finally, I would like to thank those FOL members who volunteer their time to help keep Friends of Lesotho going forward. The efforts of many people have made the successes of the last year and half possible.

**Richard Rowan, President
March 12, 2011**

Friends of Lesotho Inc. is a registered 501(c)(3) organization. Contributions are tax deductible to the extent permitted by law. A copy of the current financial statement of Friends of Lesotho is available by writing to FOL at 4110 Denfeld Avenue, Kensington, MD 20895 USA, or by emailing treas@friendsoflesotho.org. Documents and information submitted under the Maryland Solicitations Act are also available for the cost of postage and copies from the Maryland Secretary of State, State House, Annapolis, MD 21401 USA (410-974-5534).



MISSION & OBJECTIVES

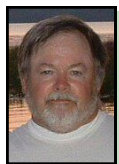
Making a difference at the grassroots level

Friends of Lesotho (FOL) is a non-profit organization promoting friendship between the peoples of Lesotho and North America. FOL is comprised of current and former Peace Corps volunteers and others who share this desire. A Board of Directors dispersed across the US has provided the leadership for the organization since 1986 in a virtual setting and depends on the active participation of the membership. The Friends of Lesotho is an affiliate of the National Peace Corps Association (NPCA).

FOL has been a point of contact and funding source for various small development and education projects in Lesotho, primarily through current Peace Corps volunteers. Many of the projects funded are too small to be considered by major donor organizations; however, they are significant to the Basotho in the community and have a direct impact. FOL's primary objectives include:

- Making a difference in the lives of Basotho via monetary assistance to development projects and tuition assistance.
- Keeping members abreast of the latest news about Lesotho via a quarterly newsletter.
- Creating a group of like-minded people to support projects that include:
 - ♦ Tuition Assistance Program – funds scholarships and school supplies for needy and deserving Basotho students
 - ♦ Volunteer Advisory Committee – funds small scale projects designed and implemented by Peace Corps Volunteers
 - ♦ HIV/AIDS Awareness
 - ♦ Orphanages (there are a growing number of orphans in Lesotho due to the AIDS pandemic)
 - ♦ Other projects deemed by the Board to be worthy of funding and adequately monitored to insure the designated application of funds.

2010 FOL OFFICERS



President
Richard Rowan
St. Paul, MN
RPCV 1979-1983



Vice President
Dyann Van Dusen
Mariposa, CA
RPCV 2003-2006



Treasurer
John Hollister
Kensington, MD
RPCV 1986-1988



Secretary
Kevin Freer
Altamonte Springs, FL
RPCV 1976-1978

25th FRIENDS OF LESOTHO Anniversary



2010 BOARD OF DIRECTORS



Ronna Abbott
Fairport, NY
RPCV
2001-2003



Hazel Domangue
Chicago, IL
RPCV
2003-2005



Julie Galbraith
Santa Fe, CA
RPCV
1987-1988



Bill Moore
St. Paul, MN
Lesotho
1983-1986



Peter Neumann
Newton, MA
RPCV
2004-2006



Dick Nystrom
Urbandale, IA
RPCV
2003-2005



Scott Rosenberg
Oakwood, OH
RPCV
1989-1991



Deena Rowe-Krumdick
Centennial, CO
RPCV
1987-1989



Janice Stapleton
Keene, NH
RPCV
2008-2010

COMMITTEE & TASK FORCE MEMBERS

Membership: Dyann Van Dusen, Peter Neumann, Charles Fogelman, Elizabeth Perry, Marty Smith, Bill Dunn, Bill Moore

Donations: Scott Rosenberg, Dyann Van Dusen, Ronna Abbott, Deena Rowe-Krumdick, Dick Nystrom, Janice Stapleton

Fundraising: Bill Moore, Bill Reed, Janissa Balcomb, Pete Neumann

Newsletter: Faye Farmer, Nicole Haber, Allison Pranger

Finance: John Hollister, Scott Rosenberg

By-Laws: Richard Rowan, Dyann Van Dusen, Kevin Freer, Julie Galbraith

Annual Meeting: Richard Rowan, Dyann Van Dusen, Kevin Freer

Nominations: Richard Rowan, Dyann Van Dusen, Kevin Freer, Janice Stapleton

Website: Marty Smith

Database: Bill Dunn

25th Anniversary Planning: Bill Reed, George Blakeslee, Allison Pranger, Becky Banton, Bridget Shanahan, Christine Madaio, Dana Kenney, Dyann Van Dusen, Hazel Domangue, Jennifer Droblyen, Joan Legallo, Kevin Freer, Lorrie Beck, Marty Smith, Michael Jacobson, Richard Rowan, Sherry Hellenkamp, Tom Carroll, Tracy Lane.

25th Anniversary

1986-2011



HISTORY HIGHLIGHTS

- 1986 Founding of Friends of Lesotho (FOL) during the 25th Anniversary Celebration of Peace Corps in Washington, D.C.; Scott Brumburgh serves as first President.
- 1988 FOL incorporated as a nonprofit organization in the State of Maryland
- 1990 Don Spicer assumed the Presidency, an office in which he would serve for 12 years
- 1991 IRS granted not-for-profit status under Section 501(c)(3) of the Internal Revenue Code
- 1991 FOL becomes affiliate of the National Peace Corps Association (NPCA)
- 1991 First donation to the newly formed Volunteer Liaison Committee (VLC) later designated the Volunteer Advisory Committee (VAC)
- 1992 FOL made its first donation to the Scholarship Fund/Tuition Assistance Program (TAP)
- 1994 FOL donated \$3,000 to Trickle-Up, which made 30 small business development start-up grants
- 1996 Website launched by Bill Dunn
- 1997 Successful fund-raising drive conducted, raising over \$5,000 between September 1997 and June 1998
- 2001 John Hollister becomes Treasurer and continues this position to the present
- 2003 First official Board election since 1988. Bill Dunn elected President and served for the next five years while continuing to manage the organizational database and website.
- 2003 Regularly scheduled Board Conference Calls established
- 2003-2006 Formal infrastructure established for Board operations including policies & procedures documented in a Board Manual, Officer and Director roles & responsibilities, and committee structures.
- 2006 Lifetime Memberships established by Board; Memorial Scholarship Program initiated by Bill Reed
- 2007-2008 CafePress and Amazon.com relationships formed
- 2008 Richard Rowan elected President
Membership reaches 380; Annual donations exceed \$45,000
- 2009 FOL Goes Green. The newsletter, Annual Report, Membership Forms, Donations, and other publications offered in electronic form.
- 2010 Website updated with many new membership services.



FUNDED PROJECTS

Making a difference at the grassroots level



TAP (Tuition Assistance Program) Since its inception in 1992, just over \$71,000 has been sent to Lesotho to support scholarships. According to a report from the 2010 TAP Committee Chair, PCV Karen Lindquist, over 1,000 students have benefited in the last 10 years.

2010 TAP Statistics:

- ♦ 29 PCVs participated by submitting applications
- ♦ 36 Schools were represented in the applications
- ♦ 111 Applications were submitted by PCVs
- ♦ 90 Students were awarded tuition assistance
- ♦ Total Amount Awarded was M50,670.50.

The VAC (Volunteer Advisory Committee) and DAR (District AIDS Representatives) were the recipients of \$1410 in 2010. Here are just a few examples of their small but meaningful projects.

PCV Gwen Kehr, Mphaki High School, Mphaki, Quthing--Project Description: Mural of Africa in two separate classrooms at the high school.

Letter Written by Student:

Dear friends of Lesotho,

On behalf of the form A' class at Mphaki High school I would like to tell you how I like to look at the map.

I enjoy having to look at the map in Development Studies because Development Studies improves our knowledge so that we will know our neighboring countries and cities and the currency used in those countries.

I would like to give thanks to you, our friends, because your work is great and improve our lives in a good way and make our future good, and make us to be interested in your work. The visitors of our school will now see a beautiful map on the wall of our classroom. They will say "It brightens up the room!"

So friends, I would like to say keep your work up and do what you are doing, Thank you!

Yours faithfully,

Limpho Fako



25th Anniversary

1986-2011



African Library Project (AFL) — 2010 marked the 3rd year that FOL has provided support to this much needed program in Lesotho. RPCV Becky Banton was the first PCV involved with AFL. Subsequently, PCVS Jackie Tipsword and Joey Lehnhard have continued to expand the program. There are now 181 libraries spread throughout all ten districts of Lesotho. A total of \$3,000 has been donated by FOL to support this initiative. The funds were used for workshops on how to organize and maintain the libraries. Additional small VAC grants were awarded to individual

PCVs for bookshelves, stickers, posters, tape, paint, and other supplies for libraries in their villages. With your help, FOL hopes to provide support for an additional 32 libraries scheduled for completion in the Spring of 2011.

PCV Erin Milloy, Mt. Moorosi, Quthing — Mural of World in Youth Center — Project Description: The money was used to buy paints and supplies to create a map of the world on an existing wall of the new youth center in Mt. Moorosi. The mural was painted by local youth and some PCVs. The youth have gained a greater knowledge of the world through the mural and the size and colors alone have pulled passing villagers in from the street to learn about the youth center and all the programs offered.



PCV Kristan Reed, Menhkoaneng Primary School, Butha Buthe — Project Description: Garden supplies and seeds were bought to allow the school children to create a garden that they would be responsible for and which would help them gain knowledge in the areas of farming, responsible work ethic and proper diet for healthy living.

25th FRIENDS OF LESOTHO Anniversary



NHTC (National Health Training College)

— \$3,000 awarded to 15 needy nursing students who are not housed in the NHTC dormitory due to lack of space. The funds were used to pay for transport and food. FOL plans to expand this pilot program in 2011 to assist all the needy students not living in the dormitory. Construction of additional dormitory space is underway with support from the Millennium Challenge Corporation but completion is not expected until 2012.

Laptops to Lesotho Inc., (L2L) Ketane, Mochales Hoek — \$2,136. L2L was founded by RPCVs Janissa Balcomb (1977-80) and Andrew Dernovsek (2007-2009) at the request of the Ketane

community. Its mission is to improve the quality of education in rural communities by providing each child with their own laptop and to develop a local organization to run the program. The hope is that using these computers will enable the children to develop advanced learning skills many Basotho aren't taught, including logic, conceptualization, abstract thinking, collaborative problem-solving, and innovation. The computers used are specifically designed for children, are inexpensive, require little power, and are water-, dust-, and drop-resistant. With FOL's early support, L2L was able to acquire enough additional funding to purchase 48 of these laptops along with solar panels, a generator, and batteries to power the laptops.



In 2010, Janissa and her brother, Craig Balcomb, traveled to Ketane and distributed the laptops at Nohana Primary School. They spent three weeks training all the teachers and the principal how to use the laptops and how to enhance their classroom teaching with the computers. They also helped the school staff write contracts delineating privileges, responsibilities, and penalties that all parties involved, including L2L, the school, teachers, parents/guardians, students, and the community, are required to sign in order to participate in the program. You can learn more at www.laptopstolesotho.org.

25th Anniversary

1986-2011



Village Hope, Little Angels, and Lesotho Child Counseling Unit (LCCU)

Orphan Support Projects: A total of \$4413.64 was sent to support these three vital programs that provide food, shelter, clothing, educational and medical support to nearly 100 orphans and vulnerable children. Village Hope received \$1811.56, Little Angels received \$1602.08, and Lesotho Child Counseling Unit received \$1000.



Village Hope in Butha Buthe and Little Angels in Thaba Bosiu were started by RPCVs Georgann Gall (2003-2006) and Rose Paradise (2003-2004) respectively. Rose still lives in Lesotho; Georgann or her adopted son, Sethunya, visit annually. Both projects receive much local support from Basotho volunteers.

LCCU is managed by its founder, Lydia Muso with support from village volunteers.

Above: Village Hope volunteers
Right Top: Village Hope
Right Middle: Little Angels
Right Bottom: LCCU (archive photo)

25th FRIENDS OF LESOTHO Anniversary



FINANCIAL STATEMENT

Recent Yearly Trends

Year	Total FOL Cash (Disposable) Donations ¹	Total Cash Operating Expenses in CY	Receipts Sent to Lesotho or held in Reserve in CY ²	Percent of Donations Used for Lesotho	Contributing Members in Year (sum of #dues plus #Life memb)
2002	\$ 5,925.48	\$ 1,155.93	\$ 4,769.55	80%	161
2003	\$ 10,819.01	\$ 1,404.56	\$ 9,414.45	87%	131
2004	\$ 17,879.43	\$ 1,682.89	\$ 16,196.54	91%	146
2005	\$ 11,339.80	\$ 857.28	\$ 10,482.52	92%	202
2006	\$ 38,073.49	\$ 1,849.27	\$ 36,224.22	95%	136
2007	\$ 28,318.99	\$ 1,207.90	\$ 27,111.09	96%	188
2008	\$ 49,438.51	\$ 1,753.37	\$ 47,685.14	96%	173
2009	\$ 46,830.15	\$ 2,855.10	\$ 43,975.05	94%	200
2010	\$ 40,560.29	\$ 15,830.57	\$ 24,729.72	61%	199

¹ FOL disposable income excludes the NPCA dues pass through and in-kind expense donations, which FOL began tracking in 2005. Starting 2006, total includes t-shirts, CDs, etc. sales and ING acct interest (2008+).

² All donations other than \$15/yr dues and fundraiser expenses are tracked by Project Fund below. Unused dues are held in FOL's cash reserve shown below, which can be added to Project Funds at the Board's discretion.

FOL 2010 Status

Cash and Sales Donations ¹ :	\$ 40,560.29	
Dues Contributing Membership:	199	(includes new Life Memberships)
Non-Member Donors:	35	

FOL 2010 Cash Balance (\$)

Current Cash in Account (12/31/10):	\$ 60,703.75
Project Obligations:	- \$ 40,477.82
Future Dues and Fundraiser Funds to Hold:	- \$ 360.20
Cash Available:	= \$ 19,865.73
Life Membership Fund	- \$ 10,591.45
EOY Cash Reserve (after unused 2010 budget²):	= \$ 9,274.28

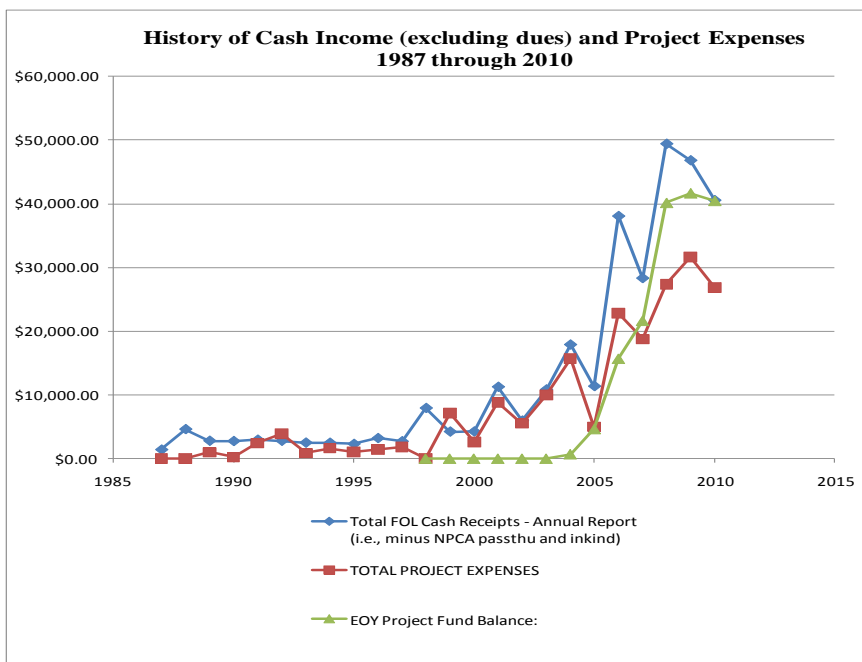
25th Anniversary

1986-2011



2010 Project and Program Fund Status

Donation Fund	End of Year Total in 2010 Fund	Total Fund Disbursements in 2010	Fund Balance Remaining to be sent
Undesignated Fund (\$250 min balance)	\$ 16,017.50	\$ 8,422.73	\$ 7,594.77
Tuition Assistance Program (TAP) Fund	\$ 26,277.96	\$ 8,433.22	\$ 17,844.74
HIV/AIDS Fund	\$ 633.52	\$ 1.35	\$ 632.17
Morija Museum Fund	\$ 0.00	\$ 0.00	\$ 0.00
Orphanages Fund	\$ 2,151.05	\$ 1,602.08	\$ 548.97
Memorial Scholarship Fund	\$ 13,354.15	\$ 24.75	\$ 13,329.40
PCV Projects	\$ 330.77	\$ 0.00	\$ 330.77
Village Hope Project (PCV)	\$ 2,008.56	\$ 1,811.56	\$ 197.00
LCCU (Lesotho Child Counseling Unit)	\$ 1,000.00	\$ 1,000.00	\$ 0.00
Uraneck PCV projects (Mountain Schools)	\$ 194.00	\$ 194.00	\$ 0.00
T. Veiga PCV Project (scholarship)	\$ 25.00	\$ 25.00	\$ 0.00
Total Program/Project Funds	\$ 61,992.51	\$ 21,514.69	\$ 40,477.82



* The 2010 operating expenses include \$14,041.03 in expenses for the Lesotho I RPCV Reunion (fundraising event) that FOL facilitated. This event, together with an additional event for the 50th PC Anniversary in 2011, involve unique expenses for these 2 years only.

25th FRIENDS OF LESOTHO Anniversary



2010 DONORS

over \$8800

Taipei, American School

\$1000-1500

Bloom Africa Inc.
Lesotho, Embassy
The First Presbyterian Church
Thompson, Daphne G.
Thompson, Jacqueline D.

\$501-600

Carroll, Thomas G.
Nichols, Martin
Reed, William
Schaeffer, Brent

\$251-500

Bloch, Paul A.
Bowne, Gary L.
Cooley, Larry (Lawrence S.)
Crompton, Catherine B.
Faix-Williams, Theresa
Grant, Ruth
Griffin, Jennifer S.
Hochstadt, Ted
Hogan, Daniel B.
Lansford, Jack L., Jr.
Livingston, Jennifer R.
Massey, David R.
Mayo, Douglas F.
Montague Jr, Kenneth C.
Neely, Stephen M.
Neumann, Peter
Phillips, Frances B.
Rea, Brad
Rohrmann, George
Roth, Lawrence M.
Ruch, David
Samuelian, Janeen Marie
Samuelian, Jason Paul

Schwartz, Howard
Smith, Kim
Zdrazil, Alfred

\$101-250

Almandsmith, David
Bell, R. Andrew
Bertocci, David C.
Boeddiker, Bill (see Parker House 2007)
Bruckner, Susan
Brumburgh, Scott
Brunsell, Norma J.
Brushett, Refiloe (Bam)
Brushett, Stephen
Buffington, Marlene
Buss, Lonny
Dabbert, James
Diver, Matthew L.
Drake, Sue
Erickson, Linda L.
Farmer, Faye
First United Church - Mission and Ministry Fund
Hanni, Don
Hollister, John
Howard, Mary M.
Howard, Richard
Jackson, Margaret Clark
Johnson, Jeffrey Scott
Kloter, Kirby O.
Korn, Nancy
Krieg, Becki
Lederman, Margaret
Lederman, Robert
Lee, David R.
Liljestrand, James S.
Moore, William
Morse, Duane
O'Keefe, John F.

O'Malley, Ann
Quinlan, Sherman L.
Rowan, Richard
Siegenthaler, Pete
Tibbits, Clark D.
Tibbits, Peggy (Farrell)
Tomlinson, Barbara J.
Zastrow, Laurie Ann

\$51-100

Abner, Anthony
Ambre, Joan
Beaumont, Wendy
Belasco, Steve
Bertocci, Margaret A.
Buss, Ella Jean
Casper, Cheryl
Casper, Dennis G.
Hesse, Paul
Humphreys, Virginia A.
Jinks, Mark B.
Marrero, Leigh A.
McCoy, John C.
Mehlhoff, Brian
Moore, Mary (Wagner)
Munson, Martha M.
Munson, Sara
Parnell, Gary
Russell, Kathleen
Shriver, Ann
Summer, Shirley J.
Thompson, Margaret
Torricollo, Denise
Van Dusen, Dyann L.
Wolf, Marilea A.

Up to \$50

Anonymous
Ainars, V.
Aerni-Flessner, John

25th Anniversary

1986-2011



Aerni-Flessner, Lauren
Ambrose, David
Balch, Christina
Balcomb, Janissa
Bartels, Jeff
Benabides, Tammy L.
Bertocci, Cindy S.
Bertocci, Ntoetse
Bertocci, Tom A.
Betz, Ava Marie
Black, Benjamin J.
Blake, Charles C.
Bosustow Brule, Nicole
Bozick, Brad
Brink, Peter
Brown, Consuella
Brown, Emory J.
Carr, Mark P.
Cary, Harold (III)
Cassel, Thomas
Cohen, Karen
Connors, Leslie A.
Conrad, Susan
Cookingham, Peter
Cosimano, Sarah
Creeden, Cheryl
Creeden, Thomas
Cromer, George
Cromer, Julie
Divine, Fredric C.
Divine, Victoria G.
Domangue, Hazel A.
Drake, George
Emmett, Annemarie
Ernst, Marisa
Ferola, Michael
Ferrick, John
Fogelman, Charles
Foscardo, George D.
Fox, Kathy
Frank, Lawrence
Galbraith, Julie

Goldknopf, Amy
Gorman, David
Hale, Jane A.
Harpman, David
Harrington, Keith
Haxton, Lynn
Healey, Jack (John G.)
Hellenkamp, Sherry
Hilger, Claire
Hiner, Cyndi
Hoag, Eugenia
Hunter, Connie
Hunter, Mary Elizabeth
(Popp)
Iversen, Kirk
Kalnbach, Janet E.
Keller, Frank G. IV
Knight, Kirk
Knight, Nancy
Koester, Kevin D.
Kwenda, Marybeth E.
Labella, Lisa
Learmonth, Robert
Learmonth, Susan
Legallo, Joan
Legallo, Larry
Lockhart, William
Losak, Matt
Lundeen, Gail Irene
Marrero, Isabelle
Marrero, Pete
McGuire, Philip
McKeever, Stacey
Micciulla, James A.
Mitchell-Harty, Jeanmarie M.
Mueller, James P.
Mullen, Gregory
Munger, George H.
Nishek, Wayne
Nolan, Rebecca Katharine
Oakley-Girvan, Ingrid
Olson-Kennedy, John

Olson-Kennedy, Kristin
Orr, Blair D.
Potsane, Nicole
Pranger, Allison
Riley, Sara (prev Sara Wehter)
Rodger, J. Arthur
Rosemary, Krista M Lewis
Rosenberg, Adam Michael
Rosenberg, Scott P.
Rowan, Tlotlisang (Sekese)
Russell, Joshua Damen
Sales, Nancy
Schmitz, Karen (Duve)
Schreiber, Karen
Schreiber, Willy
Sherwood, Cecile
Sherwood, David
Sikowitz, Marshall
Skidmore, Mary Jane
Smith, Marion
Smith, Martin W. (Marty)
Snyder, Mary Louise
Songolo, Rebecca
Sos, Robert
Spicer, Donald
Spicer, Nthakoana (Peko)
Stutzman, Pamela R.
Sullivan, Sheryl Lynn
Szekunda, Elinor
Templin, Steven A.
Tomlinson, H. Bryan
Vandegrift, Amy A.
Vandegrift, Tom
Veal, Fahmeeda Muhammad
Vogl, Sally
Walker, Allan (E. A.)
Walker, Priscilla
Walter, Mary A.
Warner, R. Craig
Whitworth, Charlene
Wohlgehagen, James Lee
Wohlgehagen, Kathy



Not on the donor list? Please note that only the 2010 contributions are listed in this report. Our financial statement and donations are now reported per calendar year. Since we moved our Annual Meeting from October to March, we regret that the donations made in the last quarter of 2009 are not listed here. If we missed your 2010 donation, please contact Richard Rowan on our website for a correction.

MEMBERSHIP REPORT

FOL has a strong core membership of approximately 200 individuals who consistently pay their annual dues. Of that number, 43 individuals have taken their commitment to the next level by becoming Lifetime Members. Since 2009 we have added 19 new members, and 56 individuals made an extra contribution while renewing or joining for a total of \$5,015 in additional donations.

However, FOL has well over 100 names in our database whose membership has lapsed. If you happen to be among this group, we invite you to join your RPCV peers in supporting the work of FOL by renewing your membership.

MEMBER DIRECTORY

To access the FOL Membership Directory, you need to be registered with our website database. Go to the Members List page, click on "Register," then fill in the necessary information. An email will be sent to you with an assigned password. Instructions will be provided in the confirmation email to allow you to personalize your password.

Members who have chosen not to be listed on the website database cannot access the directory, and their contact information is not available to member peers.

We encourage all members to visit the Membership Page at www.friendsoflesotho.org/membership/information-update/ to add your name to our electronic membership directory. Simply choose the email option from the "Subject" drop down menu so you will be listed. By doing so you will also begin receiving the FOL newsletter and other communications by email, which helps keep our operating expenses low.

WAYS TO SUPPORT FOL

MEMBERSHIP

Join FOL or

Renew your Membership

- ◆ Join or renew your membership from our website homepage.

- ◆ Become a Lifetime Member to help assure the long-term sustainability of the organization.
- ◆ Update your contact information.
- ◆ Encourage others to renew their memberships or join FOL.

25th Anniversary

1986-2011



DONATIONS

Make a Donation

FOL gladly accepts donations. Our operating expenses are covered by members' annual dues and some fundraising activities, so any extra donations are used entirely to support projects in Lesotho. The specific projects funded change over time depending on the requests we receive. FOL supports the following types of projects:

- ◆ HIV/AIDS
- ◆ Orphanages
- ◆ Tuition Assistance, including Memorial Scholarships
- ◆ The Morija Museum
- ◆ Peace Corps Volunteer Projects
- ◆ Community Development Projects
- ◆ Other types of projects as new opportunities arise.

The FOL Donations Committee considers requests for funding and makes recommendations to the Board. You may specify that a donation be directed to a particular project or type of project or you can leave it to the discretion of the Donations Committee.

If you would like to make a donation, simply mail your donation to Friends of Lesotho, 4110 Denfeld Ave., Kensington, MD 20895. Checks should be made out to "Friends of Lesotho."

You may make a donation while sending in your membership form, or you may also donate online (see below). Donations are tax deductible to the extent allowed by law, and acknowledgement for IRS purposes will automatically be made for amounts over \$250, or for any amount upon request.

Make a Memorial Contribution

Request a Donor Form and Memorial Information Sheet from FOL, and send the forms to Friends of Lesotho. For more information or to contribute, contact Bill Reed at wc44reed@aol.com.



Online Donation

If you prefer to send donations online, go to <http://www.JustGive.org> and fill in the Search Box with "Friends of Lesotho."



You are given the opportunity to specify that this is a Memorial Gift. Please also send FOL the Memorial Information Form on our website under Donations.

Alternate Gift Giving

FOL is registered on www.JustGive.org for those who wish to ask family and friends to make a donation in lieu of gifts received on birthdays, weddings, retirements and other occasions.



SHOPPING

FOL Online Store

Purchase apparel and all kinds of merchandise at FOL's online store www.cafepress.com/lesotho. You can help FOL earn up to 10% **extra** on the purchase price of items from CafePress by going directly to the FOL store rather than getting there via the CafePress home page. Remember to add "/lesotho" to the website address to do your shopping.



Sign Up for FOL Online Store News

Just go to the store home page, www.cafepress.com/lesotho. Enter your

25th FRIENDS OF LESOTHO Anniversary



email address in the box at the bottom of the “Store Newsletter” section, and click [subscribe]. We will send out store newsletters no more than three or four times a year, and only to announce new items or product lines, or when there are great deals available in the store.

Shop amazon.com

Whenever you shop at amazon.com, start at FOL first. Friends of Lesotho is an amazon.com affiliate. Access amazon.com from the FOL website and a portion of the price of your purchase will be donated to FOL by amazon.com. Go the FOL Donations Page on our website www.friendsoflesotho.org/fundraising/stuff.html, and use the link there to go to amazon.com.



VOLUNTEER

Attend FOL Board Meetings

Meetings are held at 7 pm Eastern on the third Sunday of odd numbered months. Minutes are posted about one week after each meeting. Meetings are open to all FOL members. Please use the contact page on our website for call-in information.



Share Your Expertise and Time

If you’ve always wondered how you could give a little more than your annual dues, now is the chance to volunteer your time, special skills, and enthusiasm.

- ◆ Directors are members in good standing who are elected on their ability and



- willingness to support the purpose of FOL.
- ◆ Nominations are welcome year-round.
- ◆ Elections are held at the Annual Meeting in March.
- ◆ Directors serve for 2-year terms.

Committees and Task Forces

FOL members who do not wish to make a long-term commitment to the board are encouraged to:

- ◆ join standing committees, or
- ◆ work on special projects which match their skills and interests to the needs of the organization.

For a summary of the expected level of commitment, see the Board and Committee description of work on our website. If you're interested in application or nomination, please complete the Nominating Form and email it to the address shown on the form. If you have any questions, please feel free to contact any of the committee members.



Contact Us If You Will Be Traveling to Lesotho

FOL often needs someone to make contacts for us in Lesotho, which may involve a short visit to the Peace Corps Office in Maseru, with PCVs, or projects we are supporting. Use the Contacts page on our website to let us know when you are traveling to Lesotho.



Fundraising

The Fundraising Committee is always looking for new ideas and member participation.



25th Anniversary

1986-2011



NEWSLETTERS

Sign Up for e-Newsletters

Please join your fellow FOL members and Go Green! Simply log on to the FOL website Member page, and check the box to receive your news via email.



Submit Newsletter Articles

Do you know a great website? Have you given a talk about Lesotho? Have you visited Lesotho recently? Do you have photos from Lesotho to share? Submit articles, photos, or information that may be of interest to our members to: Faye Farmer, FOL Newsletter Coordinator, [f e @hotmail.com](mailto:fe@hotmail.com), 2612 E. Geneva Drive, Tempe, AZ 85282.



Sponsor a Newsletter

If your employer or organization you belong to would like to sponsor an issue, we'll shower them with thanks and make sure their generosity is properly acknowledge and recognized. For more information, or to contribute, contact Pete Neumann, Fundraising Chair, at pneumann1947@yahoo.com.



Send Us Your Photos

FOL would love to showcase your pictures of the people, places, and things of Lesotho and Peace Corps in our various publications, including the Newsletter. Please email your photos to Janissa Balcomb at janissa@silverstar.com.



WAYS FOL CAN HELP YOU HELP LESOTHO

Transfer Funds or Supplies to Lesotho

Members and friends sometimes ask FOL for help to transfer funds or supplies to Lesotho for special projects when individuals or their organizations do not have the means to do so. Special distributions have included:

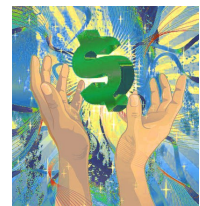


- ◆ Bank transfers for special projects in Lesotho
- ◆ Supporting programs that ship used clothing and educational materials to Lesotho
- ◆ Vitamins
- ◆ Sports equipment
- ◆ Books

- ◆ University service-learning projects
- ◆ Other on-going requests.

Apply for Funding

The Donations Committee reviews all applications for funding to the organization. The Committee meets the third Sunday of every even numbered month (February, April, June, etc.) and makes recommendations at the following month's meeting of the FOL Board for action.



If you are interested in obtaining funding for your project, please review the guidelines, and if you feel that you would qualify, complete the application and return it to the Donations Committee.



Friends of Lesotho

4110 Denfeld Avenue
Kensington, MD 20895
USA

www.friendsoflesotho.org

Shop at our Online Store

www.cafepress.com/lesotho

Profits from the store go to FOL.
Check out all the great products ...
tote bags, shirts, sweatshirts, ball caps,
gift cards, coasters, magnets, mugs,
mouse pads, and much much more!

NEW - Anniversary Items

Celebrate the PC 50th & FOL 25th
anniversaries. Visit the store for details.

NEW - Customized Items Available

For a small fee, we will customize
items with text such as your PC service
dates, district and location. Email Janissa at
janissa@silverstar.com with your special
requests.

