



FRIENDS OF LESOTHO

METSOALLE ea LESOTHO

Third Quarter 2020
Newsletter

A Word From Our President

Lumelang Metsoalle,

First, I wanted like to thank our members who continue to support our work and the board members for all the hours they have put in. I am pleased to report that FOL continues to fulfill its mission to promote positive change and to assist the people of Lesotho.

The COVID-19 pandemic has created unprecedented challenges for FOL as it tries to fulfill its mission to assist the Basotho people. The lockdown which lasted several weeks has caused significant hardship for many of Lesotho's vulnerable individuals. The ongoing lockdown in South Africa continues to cutoff Basotho workers from needed incomes. FOL is attempting to respond to this crisis by identifying food pantries dedicated to COVID-19 relief in Lesotho. To this point we have been able to assist one in Morija, but it is our hope to be able to assist two or three others in this much needed work this week.

As many of you may have heard, all Peace Corps Volunteers serving in Lesotho were sent home in mid-March. Although the 88s will not be sent back, there is some hope that the 89s (who were sworn in last year) will be able to return by the end of 2020. Back in June I wrote that FOL was proud to announce that we are working with the TAP committee (and thrilled that they have volunteered themselves to continuing the process), with the hopes that we will still be able to provide at least 70 TAP scholarships this year. However, as schools remained closed because of COVID-19, we have not yet sent these funds. FOL is staying in close contact with people in Lesotho to ensure that the funds will be available as soon as schools reopen.

Due to the COVID-19 related lockdowns in both Lesotho and South Africa, there have been increasing food and fuel shortages as well as a significant decrease in both formal and informal employment which has increased food insecurity in the country. This week it was reported that over 800,000 people in Lesotho are facing food insecurity and will be threatened by hunger. To alleviate this there has been a call for 91,000 tons of food aid. To help meet this challenge FOL has already sent \$5,000 to be used to purchase emergency food relief for those who have been impacted by COVID-19. The funds were sent to 3 different organizations in Maseru and Mafeteng districts. We hope to be able to send more funds in the near future. In addition to these funds we are in the process of working with two community organizations to produce eggs that will benefit the most vulnerable and to help repair some primary school buildings that suffered severe damage.

Lesotho is facing unprecedented challenges and I want to thank you for the trust you place in FOL to use your donations wisely and effectively to help those in the greatest need.



Sincerely,
Dr. Scott Rosenberg
President, FOL
Honorary Consul, Kingdom of Lesotho



Newsletter Features Clickable Links!!
Download the newsletter from the FOL website www.friendsoflesotho.org and you will be able to click on all the website addresses.



Photo courtesy Nicole Potsane, RPCV

Inside this issue:	
<i>President's Letter</i>	1
<i>Organizational News</i>	2
<i>COVID-19 Assistance</i>	3
<i>Qholaqhoe Connections</i>	3
<i>Education Projects</i>	4
<i>In Memoriam: Thomas Maresco</i>	4
<i>Peace Corps Memories</i>	5
<i>Lithaba tsa Lesotho</i>	6
<i>Youngest FOL Member</i>	7
<i>Amazon Smile</i>	8
<i>Support FOL</i>	9
<i>FREE FOL Membership</i>	10
<i>Treasurer's Report</i>	11



Friends of Lesotho Organizational News

Membership Committee Update

The FOL Membership Committee manages the FOL membership database and is planning to find ways to help engage more members in the work of FOL. Recently the committee started a campaign to encourage members who receive the paper version of the FOL newsletter to switch to the electronic version.

The committee is also beginning to plan on ways to make it easier for FOL members to connect with each other. In the past, a directory of members was available on the website, but that has been discontinued. We are looking at ways to replace the directory. We are also looking for people with database skills who would be interested in helping manage the database.

If you are interested in volunteering with the FOL Membership Committee, please contact Richard.rowan@friendsoflesotho.org.

Fundraising Committee Update


The FOL Fundraising Committee works to make sure FOL has the resources to help the people of Lesotho. The Tuition Assistance Program (TAP) has always been a high priority, along with support for community based projects to help improve nutrition and education. FOL also supports projects that help support individuals and families affected by HIV/AIDS. Recently the committee developed a fundraising plan to provide food support for communities and families suffering from the COVID-19 pandemic.

Requests for Continued Paper Copies of the Newsletter

Please note that beginning January 2021 we will no longer be printing and mailing newsletters to members unless we receive a request from individuals to continue to do so. We are making this change to save on printing and mailing costs so that needed funds can be directed toward projects in Lesotho.

We sent out a mailing in August to those currently receiving paper copies to ask if you are in need of a print copy of the newsletter or can now receive an email link to access the newsletters. The mailing includes a request form to continue to receive a paper copy of the newsletter or to update your email address. For inquiries, please contact the Membership Chair at richard.rowan@friendsoflesotho.org.

Website

We have an immediate need for someone to serve as webmaster to archive organizational documents, newsletters, and other information on our website. We also need someone who can help us redesign the website with the latest professional standards. Please contact Richard Rowan at richard.rowan@friendsoflesotho.org for more information. 

Submissions wanted!!

Help us create our awesome newsletter! We are looking for photographs, articles, news from the front, creative writing, reflections from your volunteer experience, travel essays, and anything else Lesotho-related.

Please send your submissions for the next FOL Newsletter to Kevin Freer, kfreer49@gmail.com.

The next deadline is November 1, 2020



COVID-19 Assistance Sent to Lesotho

[The following are excerpts from email correspondence and a project report sent to FOL.]

Dear Ntate Scott,

I am so happy that you trusted me and heard my cry and answered my request. When I was giving food to the last group of 20 people today at Ha Thetsane Lekhalong Ha Morena Mpiti Thetsane, I cried; it was tears of joy that it has happened and people were happy and the Chief and his people were more than happy. My chief said this was a big activity which needed to be covered by media. As a result, I called the Management of Lesotho Television and Radio and the food distributions were captured by Radio Lesotho and Lesotho Television as well as Harvest FM Radio.

I just want to pass my gratitude to the Friends of Lesotho and Lesotho Nutrition Initiative for feeding Basotho. People were fed; they were happy and very thankful; so am I.

Our objectives were to: identify families which were hit hard by COVID-19 - work together with the village community to make the project successful - notify people selected from village leaders through Pitso - buy the basic needed food such as meal meal, beans, moroho (cabbage) even soap to wash clothes since it's winter – and give the people food at Moreneng (Chief's place).

The food parcels were distributed according to locations: Khubetsoana Ha Rankhala, Lekhalong Ha Morena Mpiti Thetsane, and the Stadium Area.

The food distribution has given me an opportunity to know my community and people. I networked with village leaders and have a clear picture of how they operate. I managed to use the resources accordingly and the resources for food distribution and the grant gave 80 people needed food and supplies. It's a great achievement as now I have the technical know-how of how food distribution is done.

Thanks so much. It's an honor to befriend Friends of Lesotho. Indeed, le metsoalle ea sebele. Molimo a le hlohonolofatse. You fed Basotho. Today somebody will have a meal and while eating everybody will be blessing and thanking you.

Sesotho sere ngoana a sa lleng o shoela tharing, kopa o tla fuoa, (ask and it shall be given). I knocked at Friends of Lesotho and Lesotho Nutrition Initiative and the door was opened. My requisition was considered and was given a grant. I was trusted by the organization to do everything for the people to be fed. Thank You Friends of Lesotho, thank you Lesotho Nutrition Initiative for your love for Lesotho and Basotho. Basotho bare baa leboha, le sebelitse senna, pele-ea- pele. Be blessed and continue to assist when a need arise. Khotso! Pula! Nala!

Ke thabile hlee Ntate oa. KILOS Friends of Lesotho.

Monica 'Maketso Letsoha- Librarian

Botho University Lesotho 



Photos courtesy of Monica 'Maketso Letsoha

Qholaqhoe Mountain Connections



We are pleased to send you our latest newsletter which updates you on what is happening with our college scholarship students and at Qholaqhoe High School. To read the newsletter please click here: http://qmconnect.org/Assets/July_2020_QMC_newsletter.pdf. Please do not hesitate to contact us should you have any questions or comments. We thank you for your continued support of our efforts in Lesotho.

Lynn Minderman 



Peace Corps Lesotho Education Projects

Peace Corps Lesotho Education Projects

The US Peace Corps has been sending volunteer teachers and teacher trainers since the beginning of Peace Corps-Lesotho in 1966.

PCVs played a significant role from 1974-1982 in helping to establish the National Teacher Training College of Lesotho. The contributions of the US Peace Corps volunteers as faculty and intern supervisors were highlighted in a 1983 UNESCO report, *National Teacher Training College: Lesotho - (Mission). Project Findings and Recommendations*. <https://unesdoc.unesco.org/ark:/48223/pf0000055866>

On July 31, 2002 NTTC was granted autonomy and renamed the Lesotho College of Education (LCE). Since then the College has had the authority to determine its own programs and strategic plan and to allocate its own resources internally. The College has campuses in Maseru and Thaba Teska <http://www.lce.ac.ls/index.php/college-history>

PCVs continue to serve in various education sectors to improve the quality of teaching and learning in Lesotho. They serve as math teachers in secondary and high schools and as English teachers in primary schools. In addition to planning and facilitating classes they help monitor and assess student performance. And through communities of practice they exchange ideas and teaching techniques with their fellow counterparts to enhance the quality of teaching in the schools they serve.

Volunteers also teach students life skills, help establish functional school and community libraries, and assist communities in mitigating the effects of HIV/AIDS. And they have the opportunity to support extracurricular activities for students such as sports, drama clubs, cultural activities, and subject related groups. <https://www.peacecorps.gov/lesotho/projects/>



PCV Intern Supervisors, National Teacher Training College (NTTC) of Lesotho 1977



Photo courtesy of Jan Kalnbach

Back row: Ray Henry, Kathi Walker, Wade Dellagrana, Sharon Edmond, Diane Athena, Bev Kincaid, Chuck McKenny, Allen Ellis, Jan Kalnbach, Sue Briney

Mid Row: Kevin Freer, Eileen Walter, Sidney Blanks, Glen Hall, Rich VanCamp, Joe Rosa, Christine Madeo, Barbara Hardy, John Jones

Front row: Holly Powell, Kenton Hawkins, Kathi Russell, Jim Gonzalus, Ellen and Rick London, Mpoko (Guest), Grant Rockswold

10 Year Anniversary in Memory of Thomas Maresco

And as it is said in Lesotho, “*Ka mosa.*” “Even after.”

PCV Thomas (Tom) Maresco (24) died as a result of a gunshot wound ten years ago on September 3, 2010, in Maseru as a result of an attempted robbery. Tom, of Port St. Lucie, Fla., was a secondary education teacher in the village of Katse in the highlands district of Thaba-Tseka. He arrived in Lesotho for Peace Corps service in November 2009. A graduate of the University of Florida, Tom served as a science teacher in Lesotho. He was an active member of his local community in Katse and coached youth in a number of sports including basketball and swimming. Tom became his district's representative on the Peace Corps Lesotho HIV/AIDS committee and was committed to developing innovative ways to address HIV awareness and prevention among young people. He was scheduled to complete his Peace Corps service in January 2012.





Peace Corps Memories: Jim & Marjorie Scieszka

Greg & Marjorie Scieszka, along with their one-year-old son, Jim, served as PCVs in Lesotho from 1971-73, during the brief time period when Peace Corps accepted families with children. Their Peace Corps training was held over a two month period in Morija.

They were then assigned to St. Monica and taught at Sacred Heart High School. Greg taught math & history in forms D & E. Marjorie taught English & biology in forms A, B, & C. The couple established the school's first library, requesting book donations by writing letters to organizations in the U.S. Marjorie also traveled to schools in other parts of Lesotho, where she trained teachers in the use of the S.R.A. Reading Program.

The Scieszkas were heavily involved in Basotho culture and formed many friendships with their neighbors living in the village of Ha Bareth at St. Monica, in the northeastern part of the country.

They became close friends with their next-door neighbors, the Polisane family. Jim & Lisebo Polisane were best friends, and because he was only one year old when he arrived in Lesotho, Jim learned to speak fluent Sesotho while playing with Lisebo and his other Basotho friends.

He was given the Sesotho name Khotso, and Marjorie was known as "Mme Makhotso. Greg became Ntate Pule.

The Scieszkas have stayed in touch with the Polisanes for 47 years, and for the past 45 years, since returning to the U.S.A., have given Third Goal yearly presentations about Lesotho to school and community groups.

Following years working in education and raising their family, the Scieszkas served as Peace Corps Response Volunteers in Swaziland (now Eswatini), 2010-11, working in the Ministry of Education in Mbabane. During that year they traveled back to Lesotho to reunite with the Polisane family.

In 2014-15 the Scieszkas volunteered with the Canadian organization, *Help Lesotho*, based in Leribe, and once again were able to spend time with the Polisanes. During this time, they also were able to locate several of their former students from Sacred Heart High School. One of these students, Louis Rampeta, is now headmaster at the high school, and he remembered having the Scieszkas as teachers. He showed them around the campus, noting all the changes that had taken place since 1973, especially how the library had expanded over the years.



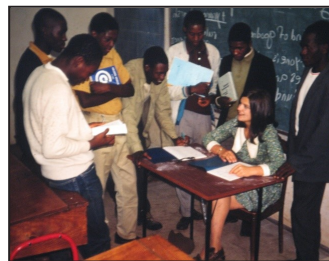
Greg & Jim with neighborhood kids. Ha Bareth. St. Monica, 1972.



Marjorie & Jim in front of the Peace Corps Office. Kingsway, Maseru, Lesotho 1972.



Marjorie teaching English to Form B students at Sacred Heart H.S., 1973.



Best friends Jim and Lisebo Polisane. St. Monica, 1973.



Greg with Form E students. Sacred Heart H.S., 1973.



Jim's 2nd birthday, 1972.



Greg teaching math to Form D students at Sacred Heart H.S., St. Monica, 1972..



Jim's 3rd birthday - Oct. 14, 1973 - St. Monica.



Litaba tsa Lesotho (News from Lesotho)

Four Women Killed in Koalabata

In Koalabata, which is in Berea, four women were recently gunned down. The same village was the scene of gruesome ritual killings in 2012. The killings came just days after two women were murdered in separate incidents in the Leribe district.

The murders are the latest in a series of violence and killings of Basotho, particularly women and children, which have led Lesotho to be among the top ten countries with the highest levels of homicides. Read more online at <http://lestimes.com/four-women-gunned-down-in-koalabata/>

AIDS Commission Disbanded

Prime Minister Moeketsi Majoro disbanded the National Aids Commission (NAC). Reportedly the government disbanded the commission because it had not been constituted consistent with required procedures. The National AIDS Commission Act requires the commission to consist of five commissioners with different kinds of expertise, but the disbanded board had 10 members.

The NAC's mandate is to provide strategic leadership and governance and efficient and effective coordination and management of the HIV/AIDS response aimed at ending the pandemic by 2030. Read more at <http://lestimes.com/majoro-disbands-aids-commission/>

Mismanagement of COVID-19 Funds

The National Emergency Command Centre (NECC) had already used M161 million out of the M698 million budget set aside by the government to fight COVID-19). There is concern of a procurement scandal where those affiliated to politicians are awarded contracts rather than entities with expertise.

In Lesotho's case, the NECC reportedly spent more than M10,782,618 on food for its staffers at a time when health care personnel were going without personal protective equipment (PPE) and there was almost no visible campaign to educate Basotho about the virus. Other money was spent on purchasing office equipment and other related items at grossly inflated prices. For details about the spending, read more at <http://lestimes.com/covidgate/>

Letšeng Mine has 80 suspected COVID-19 Cases

Letšeng Diamonds reported that it does not plan to suspend operations despite recording 80 suspected cases of COVID-19 among its employees. Out of the 80 suspected cases, 64 have since recovered while the other 12 were either at the Berea isolation hospital for COVID-19 or self-isolating at home. Lesotho had so far recorded 726 Covid-19 infections and 21 deaths.

Letšeng Diamonds has set up a Covid-19 screening facility as one of its control measures against the virus at the mine site in Mokhotlong. However, the test results are regarded as suspected cases because the facility is not accredited by the World Health Organisation (WHO) and thus the tests must be verified by the Ministry of Health. Thus far, the Ministry of Health has confirmed nine cases from Letšeng mine.

Read more at <http://lestimes.com/letseng-mine-records-80-suspected-covid-19-cases/>

Locally-owned chain store opens

Enrich Stores, a locally-owned chain store, opened its first branch in Maseru recently. The chain store is a subsidiary of Enrich Holdings, a holding company owned by over 1,200 Basotho shareholders who have raised M4 million capital to fund the ground-breaking project.

They plan to establish many different businesses including filling stations. The store currently employs 20 workers but the number is expected to increase to over 50 once its bakery and butchery sections start operating in the next few months.


The company plans to open several branches around the country. The company was started to enable Basotho to own and operate large businesses and benefit the economy. Read more online at <http://lestimes.com/locally-owned-chain-store-opens/>

Economic Downturn

Central Bank of Lesotho (CBL) has projected a 5.7 percent contraction of the economy due to the COVID-19 pandemic. The projected decline is attributed a 25.4% decline in the textile and clothing industry, a 20.9% decline in the construction industry, and a 27.6% decline in mining. Read more about the economic impact of COVID-19 at <http://lestimes.com/manufacturing-mining-lead-economic-downturn/>



Welcome to the Youngest Member of Friends of Lesotho!

Our Friends of Lesotho newsletter designer, Nicole Potsane and her husband Moseli met during her Peace Corps service from 2003-2005. They have been married for 13 years and on August 3rd they welcomed their third son, Dimo Sky. His name means “man eater” and is the nickname for Moseli’s clan, the Bakhatla. In the picture on the right, Dimo is welcomed home by his two older brothers, Ellis and Toka. 



Photos courtesy Nicole Potsane. RPCV

Litaba tsa Lesotho (continued from page 6)

Tourist Information Center Built

A new Maseru Tourist Information and Crafts Centre (MTICC), which cost M22.6 million, is near completion. The construction was necessitated because the original facility burned down in 2011. The MTICC is located in the heart of the business district, and the government has identified tourism and creative industries among its priority sectors to drive the country’s economic development.

The MTICC will house a digitized marketing platform, an amphitheater, and an arts and crafts gallery. It will also have a production workshop, archives, a restaurant, a coffee shop and small retail outlets. Read more online at <http://lestimes.com/tourist-information-centre-rises-from-the-ashes/>

Mothae Mine Suspends Operations

Mothae Diamond Mine has suspended operations while negotiating with the Ministry of Mining to allow it to sell diamonds to one of the mine’s shareholders, LUCAPA, for five years without following a tendering procedure. LUCAPA owns 70% shares in Mothae Diamond Mine and the Lesotho Government holds a 30% stake. The requests came after the mine failed to sell its diamonds in Antwerp (Belgium) because the market is closed due to COVID-19. The Ministry of Mining agreed on postponing payment of royalties and seeking a new market but refused to postpone payment of ground rent. Read more at <https://publiceyenews.com/mothae-mine-suspends-operations/>

Trout Farming in Lesotho

Lesotho’s aquaculture industry has been boosted by investment into SanLei, a leading aquaculture company headquartered in Lesotho. SanLei seeks to expand and become the largest trout operation of its kind in Africa. The company supplies trout to regional and offshore markets. SanLei is located on the shores of the Katse Dam in the highlands of Lesotho. Loosely translated from Japanese, the name “SanLei” means “where the mountains meet the sky.” Read more online at <https://publiceyenews.com/huge-boost-for-lesotho-trout-farming/>





Pictures from Jim & Marjorie Scieszka (continued from page 5)



Reunion with the Polisan family in Maseru. 2011. Lisebo, her mother Mamonyane, & Lisebo's three children.



Jim with best friend Lisebo Polisan carrying her sister Lieketsa on her back. Jim is carrying a doll. 1972.



Greg & Louis Rampeta (former student now headmaster at Sacred Heart HS) 2011...we brought many photos from 1972-73 to give him.

SHOPPING?? TURN ON AMAZONSMILE TO SUPPORT FRIENDS OF LESOTHO!!

AMAZON SMILE IS NOW AVAILABLE IN THE AMAZON SHOPPING APP!!

Turn on AmazonSmile
in the Amazon app to
generate donations.

amazon smile



AmazonSmile customers can support Friend of Lesotho in the Amazon shopping app on iOS and Android mobile phones! Simply follow these instructions to turn on AmazonSmile and start generating donations.

Open the Amazon Shopping app on your device

Go into the main menu of the Amazon Shopping app and tap into 'Settings'

Tap 'AmazonSmile' and follow the on-screen instructions to complete the process

If you do not have the latest version of the Amazon Shopping app, update your app. Click [here](#) for instructions.





Ways to Support FOL

HELP FOL WITH YOUR EXPERTISE AND TIME

Board Service

- ◆ If you've always wondered how you could give a little more to FOL, now is the chance to volunteer your time, special skills, and enthusiasm. The members of the Board of Directors of Friends of Lesotho are elected based on their ability and willingness to contribute to the achievement of the organization's goals and objectives.
- ◆ Directors are members in good standing who are elected on their ability and willingness to support the purpose of FOL
- ◆ Nominations are welcome year round
- ◆ Elections are held at the Annual Meeting in October
- ◆ Directors serve for two-year terms

Committees and Task Forces

FOL members who do not wish to make a long-term commitment to the board are encouraged to:

- ◆ Join standing committees, or
- ◆ Work on special projects which match their skills and interests to the needs of the organization

There are also committees and task forces that help carry out the Board work. These committees include Donation Distribution, Membership, Fundraising and Board Nominations & Development.

Check out the [Board Information](#) page. Also, for a summary of the expected level of commitment see the [Board and Committee description of work](#). If you're interested in application or nomination, please complete the [Nominating Form](#) and email it to the address shown within the form. If you have any questions, please feel free to contact any of the committee members.

ATTEND FOL MEETINGS

Board Meetings

- ◆ Meetings are held at 8pm Eastern on the third Sunday of odd numbered months. Minutes are posted about one week after each meeting.
- ◆ Meetings are open to all FOL members, please contact Kevin Caughlan (caughlan@earthlink.net) for call-in information.

FOL Annual Meeting

- ◆ Scheduled close to Moshoeshoe Day in March, via teleconference, more information to follow on our website. Be on the lookout for your 2019 FOL Annual Report posted on our website following the Annual Meeting.





Be an FOL Member for FREE!

Richard Rowan, RPCV Lesotho, qhomaki@mac.com

Hello, Bakhotsi! Your friendly FOL Membership Committee Chair Richard here.

As mentioned in the last FOL newsletter, Friends of Lesotho stopped collecting the mandatory \$15 yearly membership dues starting in January 2017.

[What do FOL's free dues mean for you?](#)

If you're currently a member of Friends of Lesotho:

You don't have to do anything. Your membership automatically renewed.

If you used to be a member but are no longer a member:

Take two minutes to fill out the updated [membership form online](#).

If you've never been a member:

What are you waiting for? There's never been a better time to start getting involved!

With membership fees in the rear view mirror, we need your help more than ever to continue doing the amazing work Friends of Lesotho does in Lesotho.

Amazon will donate money to Friends of Lesotho when you shop. Join Amazon Smile (smile.amazon.com) and add Friends of Lesotho as a beneficiary. Remember to use Amazon Smile when you shop on-line.

Get involved with one of the many committees in FOL.

Donate generously to our many projects, using the [form online](#).

And Remember :

We couldn't do and support the work, have the impact, and save the lives we do without your financial support. Your contributions support our work in:

- ◆ HIV/AIDS
- ◆ Orphanages
- ◆ Tuition Assistance including Memorial Scholarships
- ◆ The Morija Museum
- ◆ Peace Corps Volunteer Projects
- ◆ Community Development Projects
- ◆ Other types of projects as new opportunities arise

We work because you give.

Whether it's \$5 or \$5,000, all donations help us reach further and save more lives and because we're a registered 501(c)3, your donation is tax deductible!

If you'd like to give, please go to: <http://www.friendsoflesotho.org/donate/>



Follow us on Facebook:

<https://www.facebook.com/FriendsofLesotho>



Share your photos!

Send to editor at kfreer49@gmail.com



Follow us on twitter:

<https://twitter.com/FOLesotho>



Visit our website:

<http://www.friendsoflesotho.org>



Newsletters Past and Present—The FOL Newsletter, *Metsoalle ea Lesotho* is posted on our website homepage (<http://friendsoflesotho.org>) each quarter of the year. The complete set of newsletters is available on our website from Issue Number One, Summer, 1987 to the present. Go to Newsletters at the bottom of the home page for the archives.

Submit Newsletter Articles—Pass on RPCV updates. Recommend a Mt. Kingdom movie, music, book or Website. Share new or old photos. Been to Lesotho lately? Share it!

Submit articles, photos, or information of interest to our members to:

Kevin Freer, FOL Newsletter Coordinator kfreer49@gmail.com



Treasurer's Report

Year:	2020
Last Update:	8/6/2020

DONATIONS			
Donation Type	Total Donation (Including Fees)	Donation Related Fees	Total Net Donation
Check	\$16,720.00	\$0.00	\$16,720.00
Interest Earned	\$49.34	\$0.00	\$49.34
Other - see Description	\$24,992.00	\$0.00	\$24,992.00
Paypal Transfer	\$3,465.00	\$53.93	\$3,411.07
Grand Total	\$45,226.34	\$53.93	\$45,172.41

EXPENSES	
Expense Type	Total Expenses
Fundraising Fees/Initiative (incl. online payment fees, other)	\$56.43
Misc. Supplies	\$24.03
Postage	\$383.32
Project	\$10,000.00
Tax Fees	\$600.00
Wiring Fees	\$315.00
Grand Total	\$11,378.78

Expense Type	(Multiple Items)
--------------	------------------

PROJECTS OVERVIEW		
Project Name	Project Expense Type	Total Project Expenditures
African library COVID-19 food relief	Project Donation	\$3,000.00
	Wiring Fee	\$150.00
African library COVID-19 food relief Total		\$3,150.00
Bolula School Project	Project Donation	\$1,000.00
Bolula School Project Total		\$1,000.00
Lesobeng Itjareng Chicken Project	Failed Transfer/Lost Exchange Rate	\$303.03
	Project Donation	\$4,000.00
	Wiring Fee	\$40.00
Lesobeng Itjareng Chicken Project Total		\$4,343.03
Malealea community Covid-19 grant	Project Donation	\$1,000.00
	Wiring Fee	\$75.00
Malealea community Covid-19 grant Total		\$1,075.00
Morija Pantry Project	Project Donation	\$1,000.00
	Wiring Fee	\$50.00
Morija Pantry Project Total		\$1,050.00
Grand Total		\$10,618.03

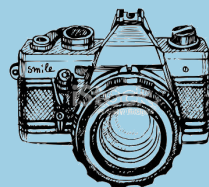
Account Type	Year Starting Balance	Current Balance - Returned Wire Transfers Fees	Returned Wire Transfers (loss)
Checking	\$20,081.04	\$27,627.03	\$303.03
Savings	\$8,803.39	\$38,852.73	
Total	\$28,884.43	\$66,479.76	

MONTHLY CHECKING ACCOUNT ACTIVITY						
SUM of Amount Activity Type						
Date - Month	Deposit	Expense	No Activity	Returned Wire	Transfer	
Jan	\$26,762.93	\$4,090.00				
Feb	\$1,855.48	\$694.83		\$3,696.97	\$15,000.00	
Mar			\$0.00			
Apr	\$16,708.98					
May	\$11,766.57	\$1,050.00			\$15,000.00	
Jun	\$261.80	\$2,198.89				
Jul	\$167.50	\$2,075.00				
Aug	\$452.97	\$1,213.63				
Grand Total	\$57,976.23	\$11,322.35	\$0.00	\$3,696.97	\$30,000.00	

Springtime in Lesotho



<https://www.piqsels.com/en/public-domain-photo-zfpmt>



GOT PHOTOS?

Do you have photos from Lesotho?
We would love to feature them in the newsletter!

Send your photos to the editor
kfreer49@gmail.com



FRIENDS OF LESOTHO

115 Monterey Avenue
Oakwood, OH 45419



Making a difference at the grassroots level
www.friendsoflesotho.org

METSOALLE ea LESOTHO

Third Quarter 2020
Newsletter



FRIENDS OF LESOTHO

President: Scott Rosenberg (rosenberg@wittenberg.edu)

Vice President: Bill Moore (litapole@gmail.com)

Secretary: Kevin Caughlan (caughlan@earthlink.net)

Treasurer: John Hollister (johnh@zapdoodat.net)

Board Members: Cayla Anderson (cayla.a23@gmail.com)

Rachel Edmonds (redmonds48@gmail.com)

Marisa Ernst (ernst.marisa@gmail.com)

Kevin Freer (kfreer49@gmail.com)

Jennifer Jiggetts (jenjiggetts@gmail.com)

Ali Kukovich (ali.kukovich@gmail.com)

Emma Mcevoy (e.mc.evoy05@gmail.com)

Tishina Okegbe (tokegbe@gmail.com)

Rory Pulvino (rapulvino@gmail.com)

Richard Rowan (qhomaki@mac.com)

Danielle Sharp (danielle.m.sharp@gmail.com)

Andrew Steele (andresteele2@gmail.com)

Meghan White (white.meghan0@gmail.com)

Newsletter Team: Kevin Freer, Editor (kfreer49@gmail.com)

Nicole Potsane, Graphic Designer

Mary Howard and Deena Lawrence, Copy Editors

Ella Kwisnek, News from Lesotho

Social Media: Ali Kukovich and Megan White

Website: Marty Smith